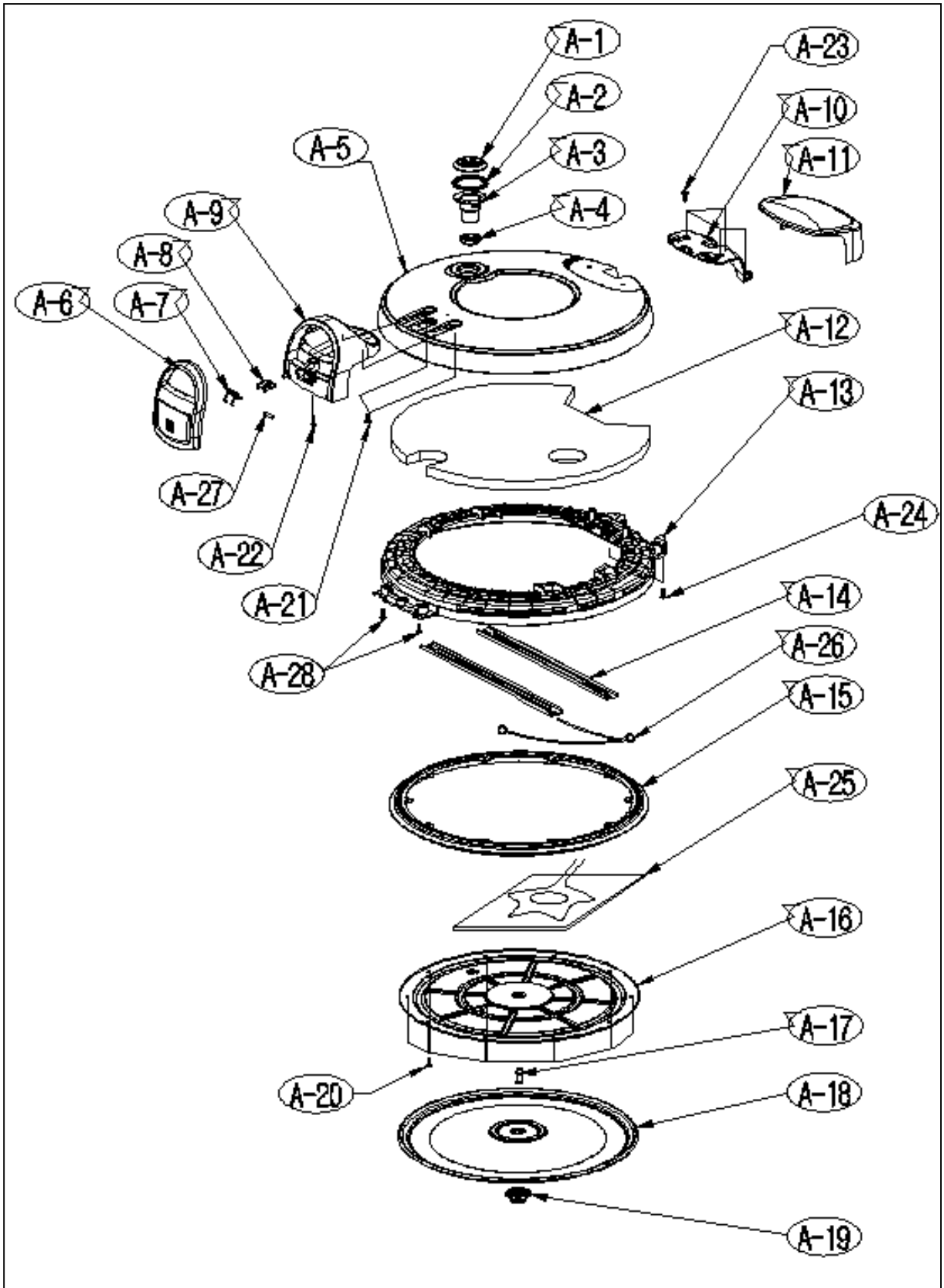


5. Exploded Drawing and Part List

5-1. A (TOP COVER ASM)



5. Exploded Drawing and Part List

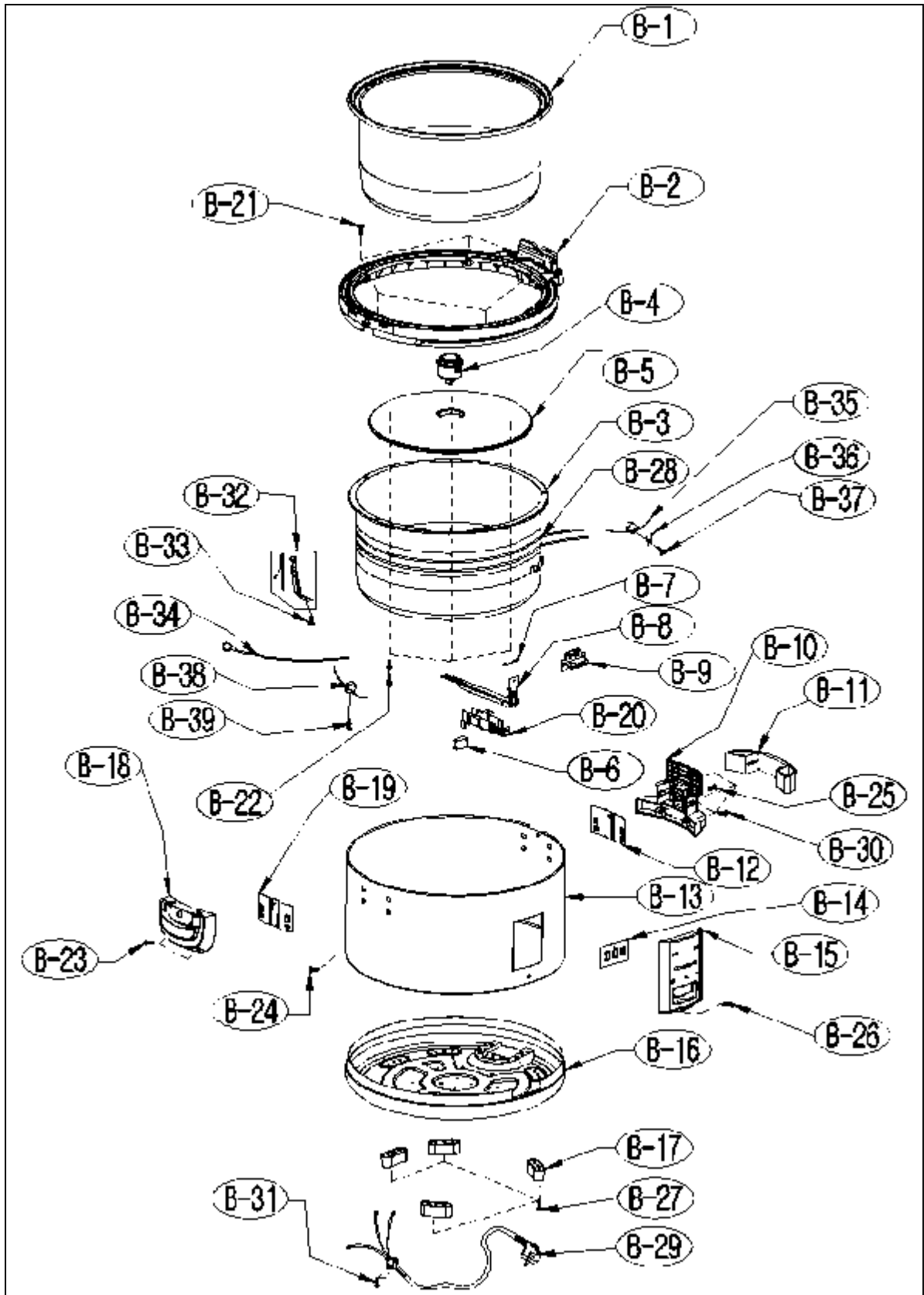
5-1. A (TOP COVER ASM) PART LIST

NO	부품명	PART NO (CR-3521B)	PART NO (CR-3521R)	소요량	비고
A-1	STEAM VENT UPPER	00128-0031A0	00128-0031A0	1	전용
A-2	STEAM VENT SEAL PACKING	00332-0227A0	00332-0227B0	1	전용
A-3	STEAM VENT LOWER	00128-0032A0	00128-0032B0	1	전용
A-4	EYELET PACKING	00332-0134A0	00332-0134A0	1	CR-3021 공용
A-5	TOP COVER	00111-0228C0	00111-0228A0	1	전용
A-6	CLAMP KNOB	00367-0274B0	00367-0274B0	1	CR도금
A-7	CLAMP SPRING	00352-0200A0	00352-0200A0	1	전용
A-8	CLAMP BRACKET	00193-0017A0	00193-0017A0	1	CR-22 공용
A-9	HANDLE	00113-0127A0	00113-0127B0	1	전용
A-10	HINGE HOLDER	00181-0397A0	00181-0397B0	1	전용
A-11	HINGE HOLDER COVER	00181-0400A0	00181-0400B0	1	전용
A-12	TOP INSULATOR	00271-0038A0	00271-0038A0	1	전용
A-13	TOP LOWER COVER	00121-0107A0	00121-0107B0	1	전용
A-14	TOP LOWER COVER BEAM	00174-0032A0	00174-0032A0	2	CR-3513 공용
A-15	COVER PACKING	00331-0087A0	00331-0087A0	1	전용
A-16	TOP HEATER PLATE	00146-0042A0	00146-0042A0	1	CR-3513 공용
A-17	TOP HEATER PLATE BRACKET	00354-0006A0	00354-0006A0	1	CR-3513 공용
A-18	OVEN COVER	00141-0026A0	00141-0026A0	1	CR-3513 공용
A-19	RUBBER PACKING	00332-0006A0	00332-0006A0	1	CR-3513 공용
A-20	TAPPING SCREW 4X12 STS	00328-0007A0	00328-0007A0	9	공용
A-21	SCREW TTS2 4X10	0000132410D0	0000132410D0	2	공용
A-22	SCREW ASM,MTS 4X24.STS	00323-0010A0	00323-0010A0	1	전용
A-23	SCREW TTS2 4X12	0000132412D0	0000132412D0	4	공용
A-24	SCREW TTS2 4X28 STS	0000132428H0	0000132428H0	2	전용
A-25	TOP HEATER	00212-0058A0	00212-0058A0	1	CR-3513공용
A-26	EARTH LEAD WIRE	00263-0153G0	00263-0153G0	1	테프론 전선
A-27	CLAMP PIN	00352-0039E0	00352-0039E0	1	CR-3021 공용
A-28	SCREW TTS2 4X12 STS	0000132412H0	0000132412H0	2	공용

안전

5. Exploded Drawing and Part List

5-2. B (BODY ASM AND OVEN COVER ASM)



5. Exploded Drawing and Part List

5-2. B (BODY ASM AND OVEN COVER ASM) PART LIST

NO	부품명	PART NO(CR-3521B)	PART NO(CR-3521R)	소요량	비고	
B-1	OVEN	00143-0077B0	00143-0077B0	1	CR-3513 공용	
B-2	RING CASE	00123-0046A0	00123-0046B0	1	전용	
B-3	OVEN CASE	00153-0050F0	00153-0050F0	1	공용(BRACKET부 변경)	
안전	B-4	MAGNET SWITCH ASM	00222-0002E0	00222-0002E0	1	SPEC : 142℃
안전	B-5	HEATING PLATE	00210-0062F0	00210-0062F0	1	공용(SCREW체결부 변경)
안전	B-6	MICRO SWITCH	00227-0013C0	00227-0013C0	1	공용
B-7	FIXING BAR	00351-0017D0	00351-0017D0	1	공용	
B-8	SWITCH LEVER	00191-0073A0	00191-0073A0	1	전용	
B-9	SWITCH KNOB	00367-0275A0	00367-0275B0	1	전용	
B-10	DEW DISH HOLDER	00181-0399A0	00181-0399B0	1	전용	
B-11	DEW DISH	00371-0072A0	00371-0072A0	1	전용	
B-12	DEW DISH HOLDER BRACKET	00193-0087A0	00193-0087A0	1	CR-3021공용	
B-13	OUT CASE	00131-0119A0	00131-0119B0	1	전용	
안전	B-14	LAMP PWB ASM	00240-0135A0	00240-0135A0	1	전용
B-15	LAMP HOLDER	00171-0068A0	00171-0068B0	1	전용	
B-16	BASE COVER	00127-0016G0	00127-0016H0	1	공용(색상변경)	
B-17	LEG	00377-0013P0	00377-0013Q0	4	공용(색상변경)	
B-18	CLAMP HOLDER	00181-0398A0	00181-0398B0	1	전용	
B-19	DEW DISH HOLDER BRACKET	00193-0087A0	00193-0087A0	2	CR-3021공용	
B-20	SWITCH LEVER HOLDER	00182-0068A0	00182-0068A0	1	전용	
B-21	SCREW CTS 3X14	0000142314H0	0000142314H0	5	공용	
B-22	SCREW TTS2 4X10	0000132410D0	0000132410D0	3	공용	
B-23	SCREW TTS2 4X12 BLACK	0000132412C0	0000132412C0	2	공용	
B-24	SCREW TTS1 4X12 BLACK	0000131412C0	0000131412C0	4	공용	
B-25	SCREW TTS2 4X16 BLACK	0000132416C0	0000132416C0	2	공용	
B-26	SCREW RTS2 4X10 SN	0000122410F0	0000122410F0	1	공용	
B-27	SCREW TTS2 4X10	0000132410D0	0000132410D0	4	공용	
안전	B-28	SIDE HEATER	00213-0084E0	00213-0084E0	1	공용(길이변경)

5. Exploded Drawing and Part List

5-2. B (BODY ASM AND OVEN COVER ASM) PART LIST

NO	부품명	PART NO(CR-3521B)	PART NO(CR-3521R)	소요량	비고	
안전	B-29	POWER CORD ASM	00260-0135C0	00260-0135C0	1	CR-3513공용
	B-30	SCREW TTS2 4X12 BLACK	0000132412C0	0000132412C0	4	공용
	B-31	SCREW TTS2 4X14	0000132414D0	0000132414D0	1	공용
안전	B-32	MICRO TEMP ASM	00230-0035M0	00230-0035M0	1	SPEC : 216℃
	B-33	SCREW RTS1 4X10	0000121410F0	0000121410F0	1	공용
	B-34	EARTH LEAD WIRE	00263-0077B0	00263-0077B0	1	공용
	B-35	THERMOSTAT ASM	00233-0024R0	00233-0024R0	1	공용(SPEC 변경)
	B-38	THERMOSTAT R TYPE	00233-0108A0	00233-0108A0	1	전용
	B-39	SCREW RTS1 3X8	0000121308F0	0000121308F0	1	공용

6. Precautions during Disassembling and Assembling

1. Disconnect the power cable from the power outlet before attempting disassembling the product.
2. Never pull lead wire when disassembling connections such as connectors and connection terminals.
3. Prevent excessive impact to part during disassembling and reassembling the product.
4. Specified parts or those of equivalent capabilities shall be used for repair or replacement of parts. It is required to check the replacement parts for any defects or compatibility with operation conditions.
5. Once repair is complete, the automatic temperature switch (M/T switch assembly) shall firmly be fastened to the heating plate. Execute trial operation of the product after installing the oven in the product after assembling to make sure that microcontroller switch normally operates.
6. Never forget to check the connection terminals and the connectors connected to the lead wires for correct wiring by referring to the wiring diagram during assembling the product.
7. When handling exposed wires and terminals such as the lamp PWB assembly, proceed with the work by holding non-charging section on the outer surface of the product to the largest extent.