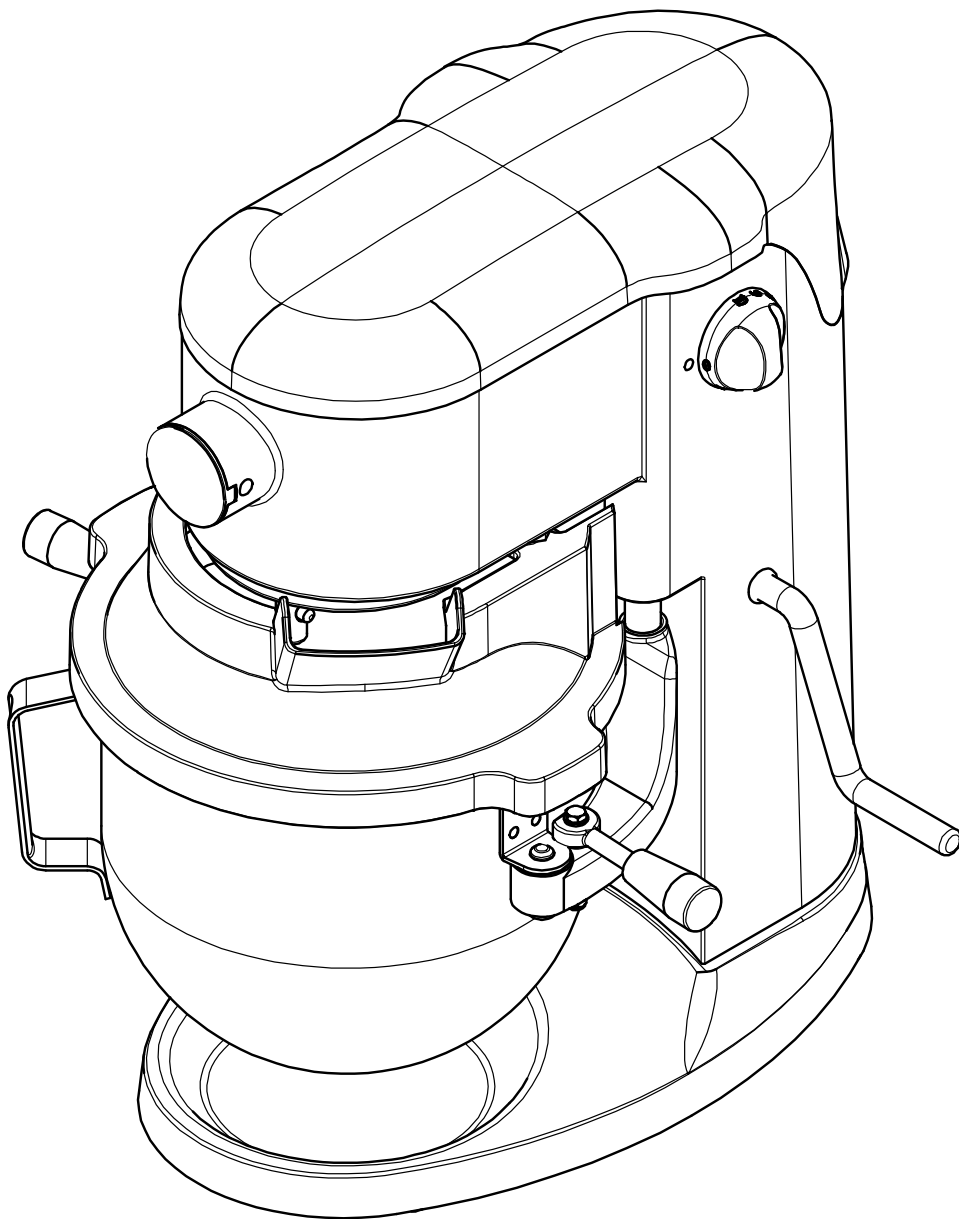
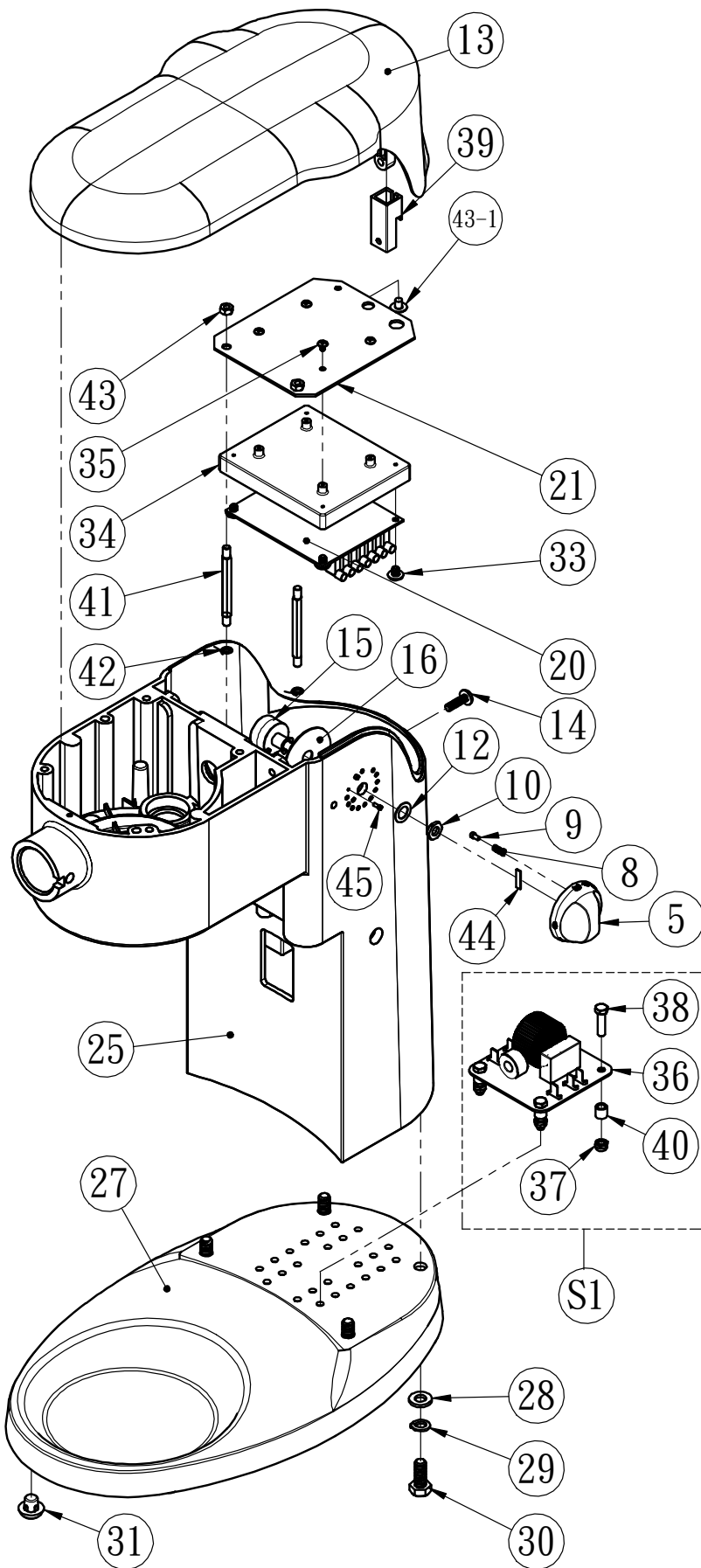
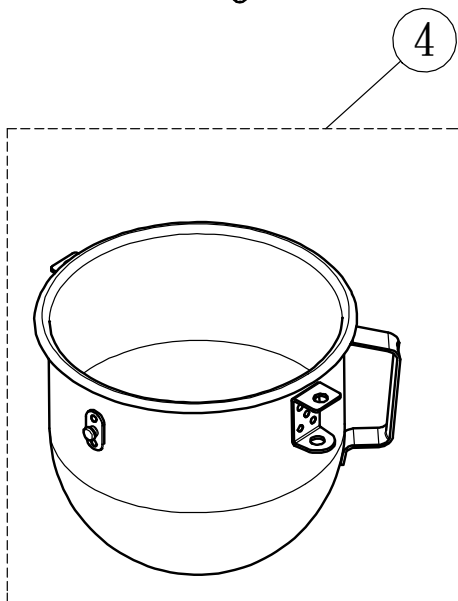
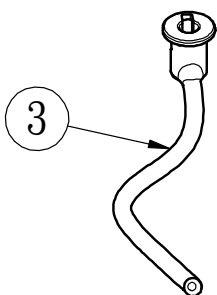
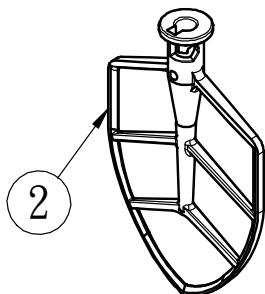
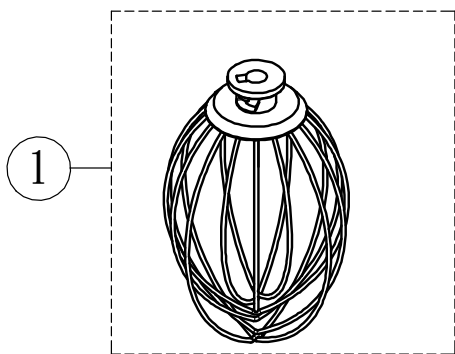


MODEL SP-502A



2016 Version

SP-502 & SP-502A MAIN ASSEMBLY



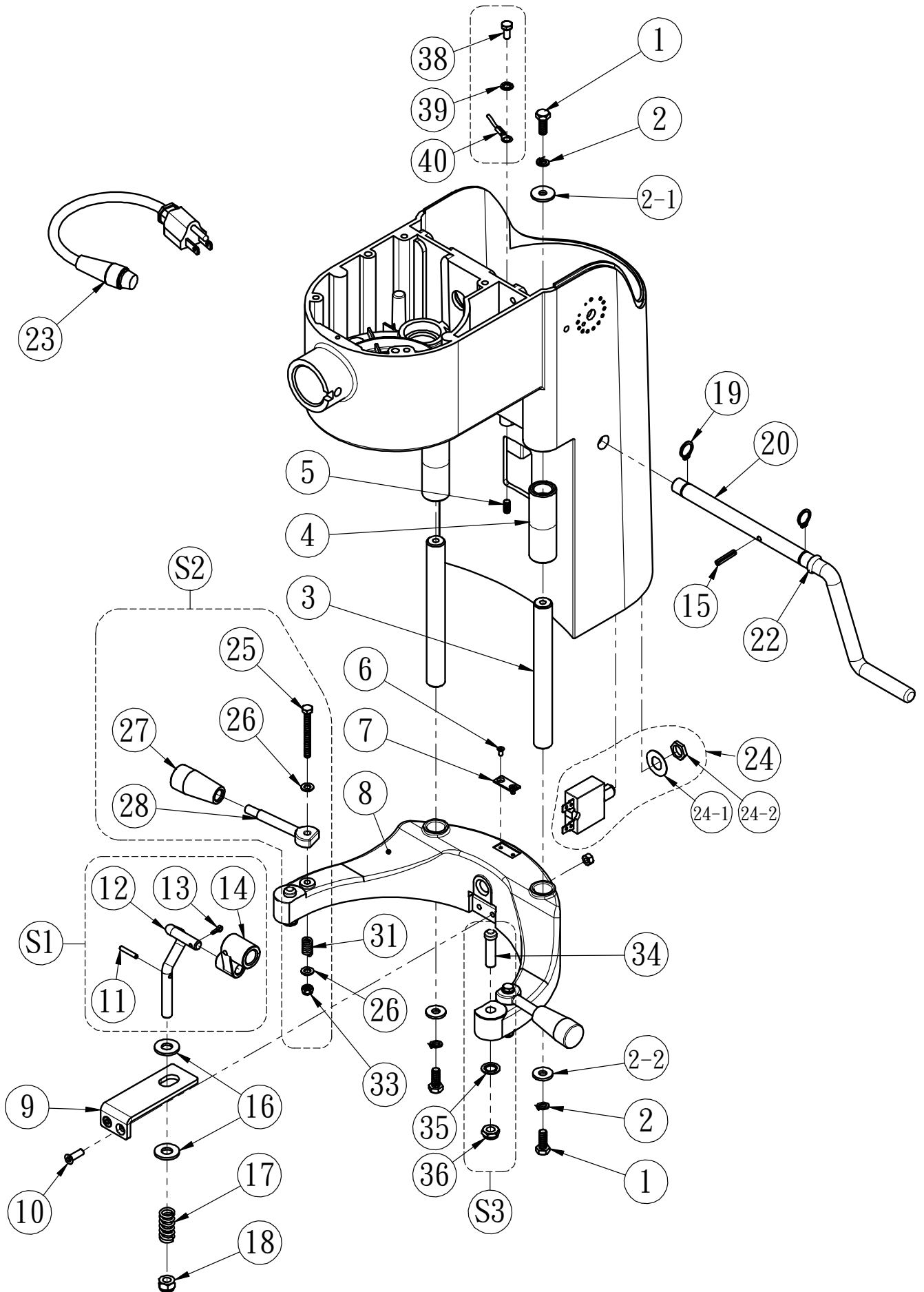
PART:A SP-502 & SP-502A MAIN ASSEMBLY

ITEM	PART NO.	DESCRIPTION	Q'ty	REMARK
1	5A01	Whip	1	
2	5A02	S/S Beater	1	
3	5A03	S/S Dough Hook	1	
4	5A04S	Bowl	1	
5	5A05-1	Speed Control Knob	1	
6	***	***	-	
7	***	***	-	
8	5A08-1	Spring	1	
9	5A09	Plunger	1	
10	A201-B14T020	Hex Nut(M9x0.75-2T)	1	
11	***	***	-	
12	A301-A14-15-1	Washer(M9x15x0.5t)	1	
13	5A13-1	Top Cover	1	SP-502 & SP-502A MODEL USE ONLY
14	A106-A1034-A1	Screw (M5x18L)	1	
15	5A15	Speed Switch	1	
16	5A16	GASKET	1	
17~19	***	***	-	
20	U-5A20	Electronic Circuit Board	1	Please specify voltage when ordering
21	5A21	Bracket for PCB	1	
22	***	***	-	
23	***	***	-	
23-1	***	***	-	
23-2	***	***	-	
23-3	***	***	-	
24	***	***	-	
25	5A25-1	Main Body	1	Please specify color when ordering
26	***	***	-	
27	5A27	Base	1	Please specify color when ordering
28	A301-A13-16-3-A1	Washer(M8x16x2t)	4	
29	A302-A13-A1	Spring Washer	4	
30	A101-A1309-A1	Screw(M8x20L)	4	
31	UH-1260	Rubbert Mat	4	
32	***	***	-	
33	A116-A0603	Screw(M3x6L)	4	
34	5A34	Plastic Box for PCB	1	
35	A109-A0603-B5A	Screw(M3x6L)	4	
S1	5A36S	L-C PCB ASSEMBLY	1	Only available for SP-502A Model in certain market.
36	***	***	-	
37	A202-A10050-A1	Nut(M5x5H)	4	
38	A101-A1009-A1	Screw(M5x20L)	4	
40	5A40	Tube	4	

PART:A SP-502 & SP-502A MAIN ASSEMBLY

ITEM	PART NO.	DESCRIPTION	Q'ty	REMARK
39	5A39	Reinforcement - Top Cover Use	1	
41	5A41	Mounting Plate Standoff	2	
42	A302-A10-A1	Spring Washer (M5)	2	
43	A201-A10-A1	Hex Nut(M5)	2	
43-1	A106-A1003-A1	Screw(M5x6L)	1	
44	5A44	Tab, Alignment	1	
45	A102-A0102-C4	Screw (M2x5L)	2	

SP-502 & SP-502A BODY UNIT



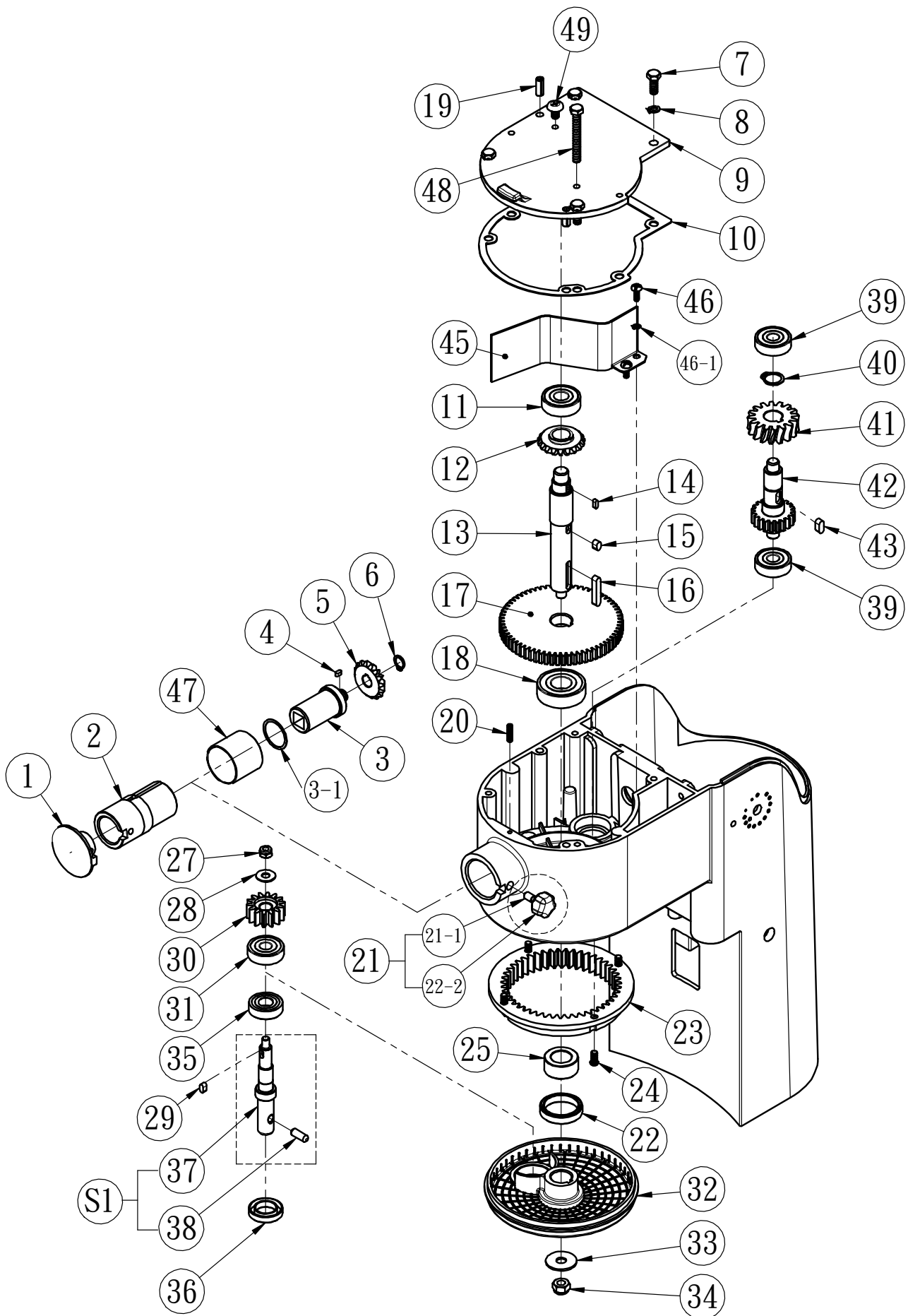
PART:B SP-502 & SP-502A BODY UNIT

ITEM	PART NO.	DESCRIPTION	Q'ty	REMARK
1	A101-A1108-A1	Screw(M6x16L)	4	
2	A302-A11-A1	Spring Wahser (M6)	4	
2-1	A301-A11-19-1-A1	Washer(M6x19x2t)	4	
3	5B03	Bowl Lift Shaft	2	
4	5B04	Bowl Lift Bushing	2	
5	A103-A1005-C4B/G1	Screw(M5x10L)	1	
6	A107-A0603-D	Screw(M3x6L)	2	
7	5B07	Bowl Limit Pad	1	
8	5B08	Bowl Holder	1	
9	5B09	Bowl Lift Bracket	1	
10	A107-A1030-A1	Screw(M5x15L)	2	
S1	5B12S	Bowl Lift Rod Assembly	1	Assembly Part
11	A902-03018	Pin (3x18L)	1	
12	***	Bowl Lift Connecting Rod	1	
13	A903-002	Pin(3/32"x5/8"L)	1	
14	***	Bowl Lift Connector	1	
15	A902-04020	Pin	1	
16	A301-A14-20-1-A1/G1	Washer(M9x20x2t)	2	
17	800072	Spring	1	
18	A202-A13080-A1	Nut(M8x8H)	1	
19	STW-12	C-Ring(STW-12)	2	
20	5B20	Bowl Lift Handle	1	
21	***	***	-	
22	A601-010-01	O-Ring(10x3)	1	
23	5B23	Power Cord	1	Please specify the right type
24	5B24	Circuit Breaker	1	Please specify voltage when ordering
24-1	***	Sticker	1	
24-2	***	Nut	1	
S2	800089S	Bowl Clamp Assembly	2	Assembly Part
25	A101-C0113-B1/G1	Screw(3/16"x1 3/4"L)	2	
26	A301-A10-10-1-A1	Washer(M5x10x1t)	4	
27	RC033-1	Plastic Knob	2	
28	800089	Bowl Clamp	2	
29	***	***	-	
31	5B31	Spring	2	
33	A202-C01050-A1	Nut(3/16"x5H)	2	

PART:B SP-502 & SP-502A BODY UNIT

ITEM	PART NO.	DESCRIPTION	Q'ty	REMARK
30	***	***	-	
32	***	***	-	
34	5B34	Dowel - Bowl Locating	2	
35	A301-A13-16-1-A1	Washer(M8x16x1t)	2	
36	A202-A13060-A1	Nut(M8x6H)	2	
37	***	***	-	
38	A101-A1005-A6/G1	Nut (M5x10L)	1	Only available for certain market
39	A303-A10-A1	Washer(M5)	1	
40	***	Grounding Line	1	

SP-502 & SP-502A GEAR BOX ASSEMBLY



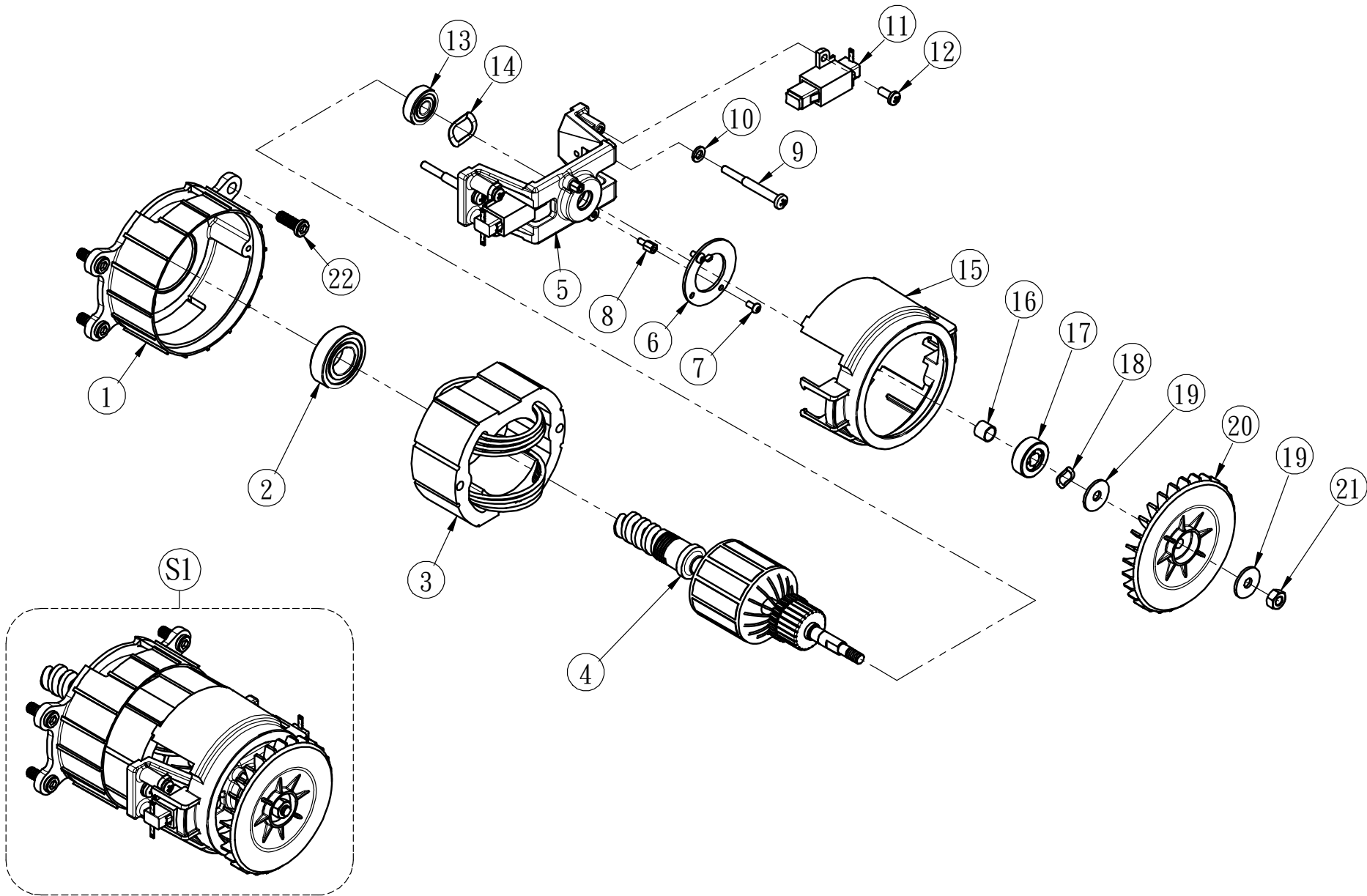
PART:C SP-502 & SP-502A GEAR BOX ASSEMBLY

ITEM	PART NO.	DESCRIPTION	Q'ty	REMARK
1	5C01	Cover for Attachment Hub	1	
2	5C02	Attachment Hub	1	
3	5C03	Bevel Drive Gear Shaft	1	
3-1	5C03-1	Gasket	1	
4	A402-030306N	KEY (3x3x6)	1	
5	5C05	Bevel Drive Gear (16T)	1	
6	STW-10	C-Ring(STW-10)	1	
7	A101-A1109-A1	Screw(M6x20L)	4	
8	A302-A11-A1	Spring Washer (M6)	4	
9	5C09	Cover for Gear Box	1	
10	5C10	Gasket	1	
11	A502-6201	Ball Bearing(6201)	1	
12	5C12	Bevel Drive Gear (19T)	1	
13	5C13	Main Shaft	1	
14	A402-030308N	KEY (3x3x8)	1	
15	A402-050508N	KEY (5x5x8)	1	
16	A402-050528N	KEY (5x5x28)	1	
17	5C17	Gear (68T)	1	Not Available
	5C17-1	Gear (66T)	1	
18	A502-6203LLU	Ball Bearing(6203LLU)	1	
19	A902-06016	Pin (6x16L)	2	
20	A103-A0808-C4	Screw(M4x16L)	1	
21	5C21	Screw for Attachment Hub Use	1	Assembly Part
	***	***	-	
	***	***	-	
22	TC-283507	Oil Seal(28x35x7)	1	
23	5C23	Plantary Internal Gear(47T)	1	
24	A102-A1005-C4/G1	Screw(M5x10L)	4	
25	800117	Oil-Seal Bushing	1	
26	***	***	-	
27	A202-A11060-A1	Nut(M6x6H)	1	
28	A301-A11-16-1-A1	Washer(M6x16x1t)	1	
29	A402-040408N	KEY (4x4x8)	1	
30	5C30	Pinion Gear(14T)	1	
31	A502-6200LLU	Ball Bearing(6200LLU)	1	
32	5C32	Planetary Holder	1	

PART:C SP-502 & SP-502A GEAR BOX ASSEMBLY

ITEM	PART NO.	DESCRIPTION	Q'ty	REMARK
33	A301-A13-25-1-D	Washer(M8x25x1.5t)	1	
34	A202-A13080-A1	Nut(M8x8H)	1	
35	A502-6001LLU	Ball Bearing(6001LLU)	1	
36	TC-172806	Oil Seal(17x28x6)	1	
S1	5C37S	Planetary Shaft Assembly	1	Assembly Part
37	***	Planetary Shaft	1	
38	800037	Pin(ø3)	1	
39	A502-6200	Ball Bearing(6200)	2	
40	STW-15	C-Ring(STW-15)	1	
41	5C41	Worm Wheel (16T)	1	
42	5C42	Transmission Shaft (20T)	1	Not Available
	5C42-1	Transmission Shaft (22T)	1	
43	A402-050512N	KEY (5x5x12)	1	
44	***	***	-	
45	5C45	Divider Plate	1	
46	A106-A0805-A1	Screw(M4x10L)	2	
46-1	A302-A08-A1	Spring Washer (M4)	2	
47	5C47	Bushing	1	
48	A101-A1115-A1	Screw(M6x50L)	1	
49	A106-A1105-A1	Screw(M6x10L)	1	

SP-502 & SP-502A MOTOR ASSEMBLY

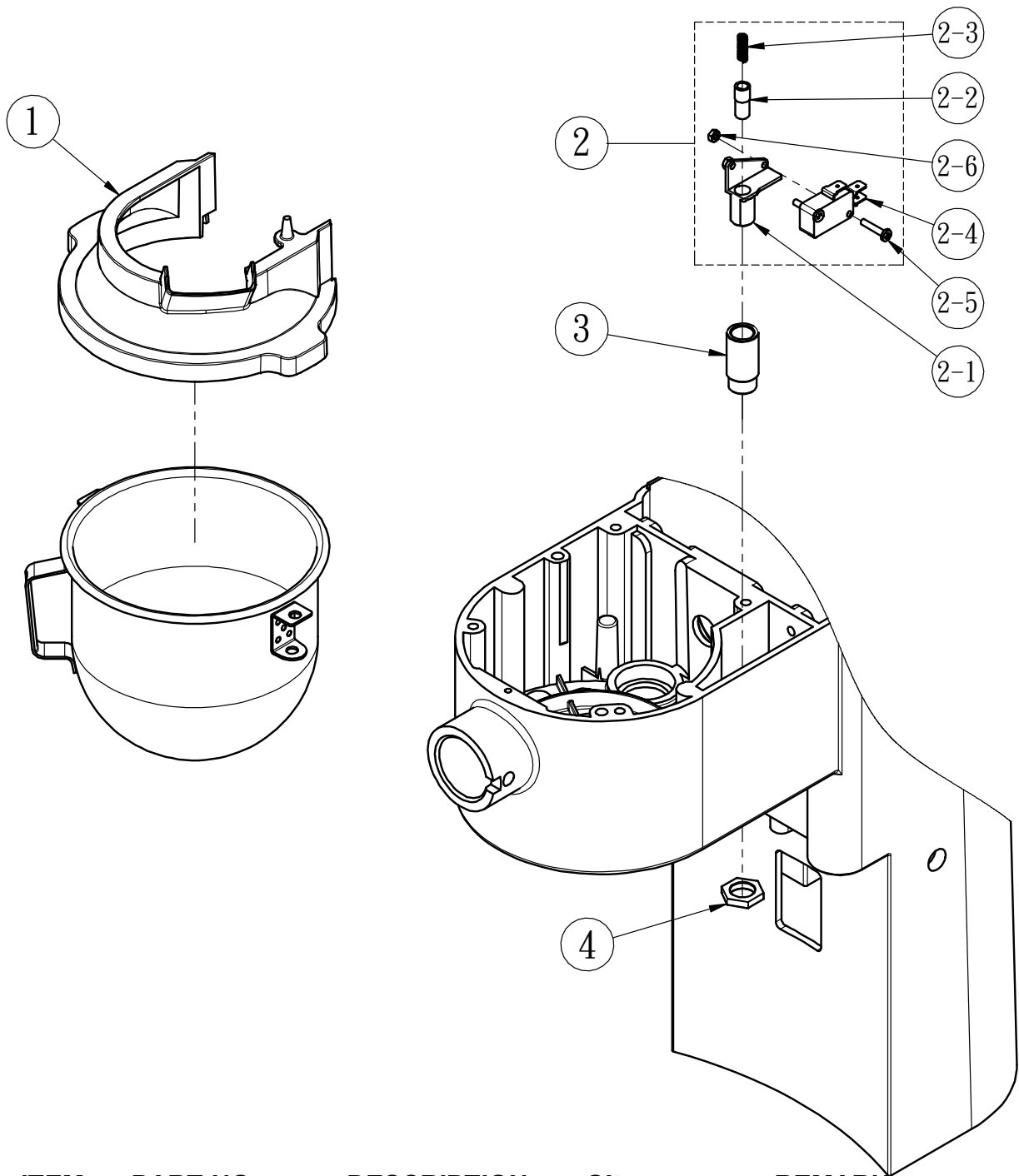


PART:D SP-502 & SP-502A MOTOR ASSEMBLY

ITEM	PART NO.	DESCRIPTION	Q'ty	REMARK
S1	U-5DS1	MOTOR ASSEMBLY- 110V	1	Please consult us before ordering
	U-5DS2	MOTOR ASSEMBLY- 220V	1	Please consult us before ordering
	U-5DS3	MOTOR ASSEMBLY- 220V	1	Please consult us before ordering
1	***	Motor Front Cover	1	
2	***	Ball Bearing- 6003LLU	1	
3	***	Motor Coil	1	
4	***	Motor Shaft	1	
5	***	Motor Back Cover	1	
6	5D15	Tachometer	1	
7	***	Plastic Screw (M3x6L)	2	
8	***	Spacer, Bakelite - 10mm	2	
9	***	Screw(M4)	2	
10	***	Spring Washer (M5)	2	
11	5D09	Carbon Brush (One piece)	2	Please consult us before ordering
	5D09-1	Carbon Brush (One piece)	2	Please consult us before ordering
12	***	Screw (M4x10L)	4	
13	***	Ball Bearing- 608LLU	1	
14	***	Washer	1	
15	5D25	Dust Cover	1	
16	***	Tube	1	
17	5D18-2	Maganet	1	
18	***	Washer	1	
19	***	Washer	2	
20	5D11-1	Fan	1	
21	***	Nut	1	
22	5D01A	Screw(M6X16L)	4	

NOTE: For the item without part number, it means that we do not sell it individually.

SP-500A & SP-502A SAFETY GUARD UNIT



ITEM	PART NO.	DESCRIPTION	Q'ty	REMARK
1	5E01	Safety Cover	1	SP-500A & SP-502A Use Only
2	30051-1S	Micro Switch Assembly	1	Assembly Part
2-1	30051	Fixture for Micro Switch	1	
2-2	30051-1	Plastic Plunger	1	
2-3	200075-1	Spring	1	
2-4	J403-001	Micro Switch	1	
2-5	A105-A0630-A1	Screw (M3x15L)	2	
2-6	A201-A06-A1	Nut (M3)	2	
3	800152-1	Tube for Micro Switch	1	
4	800152-2	Nut for Micro Switch	1	