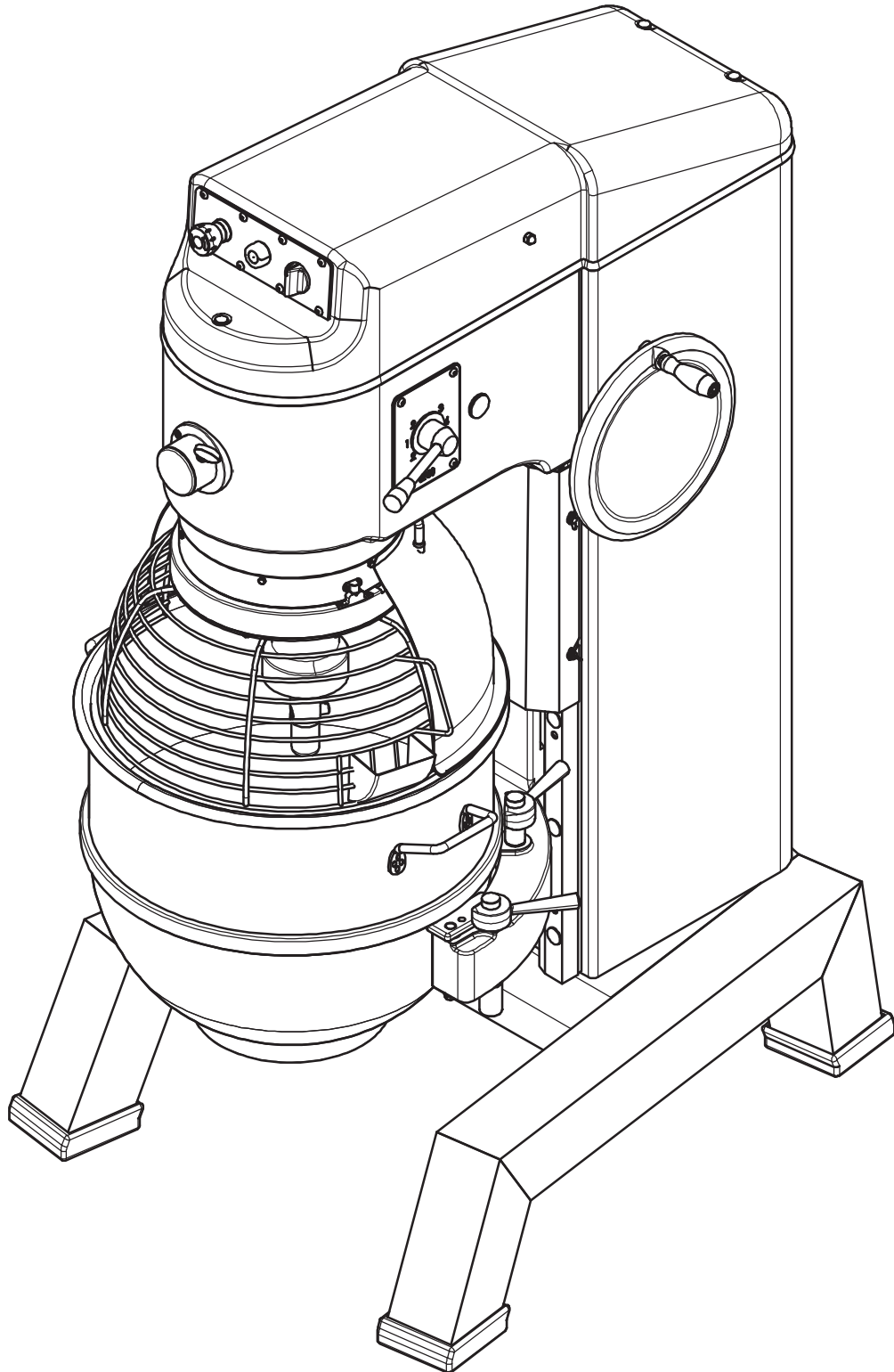
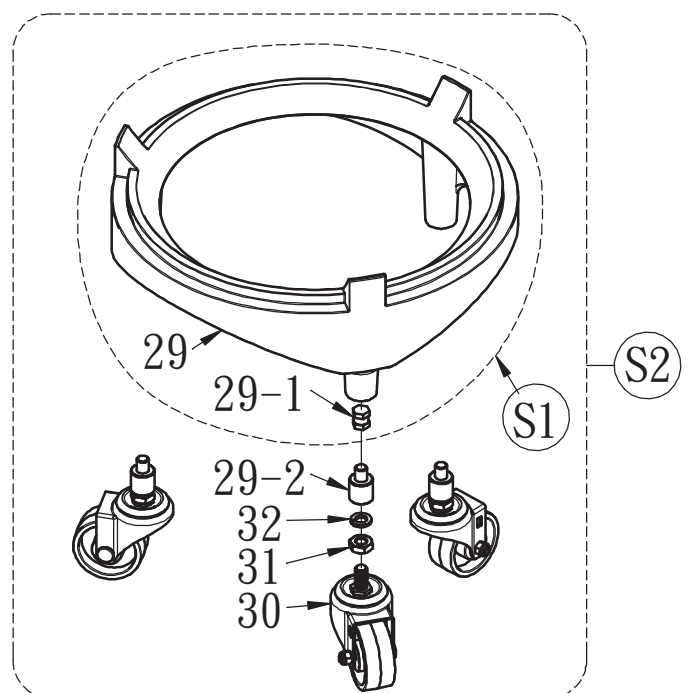
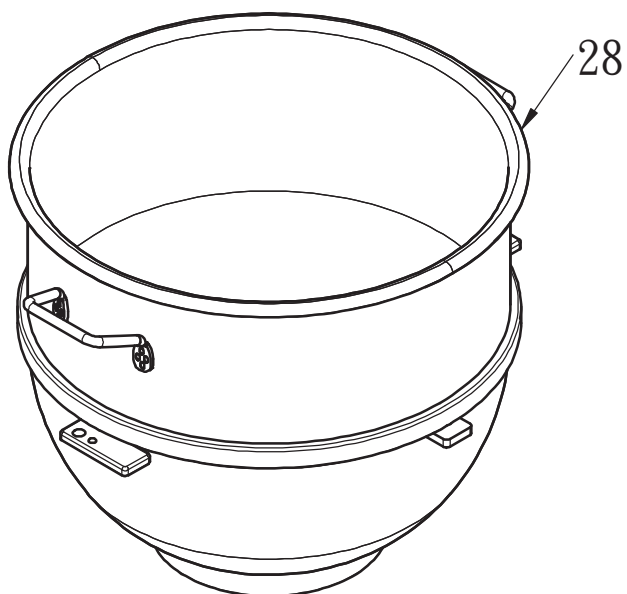
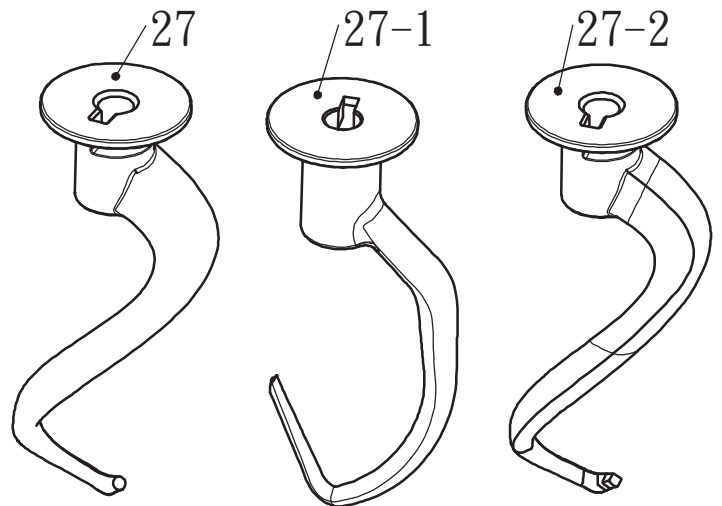
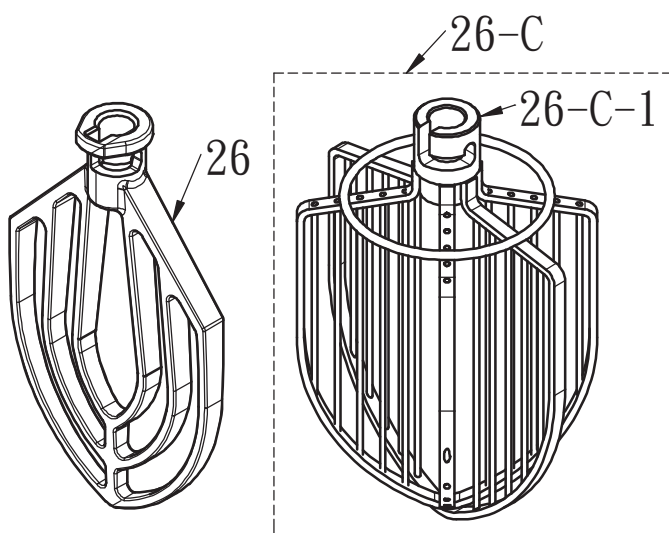
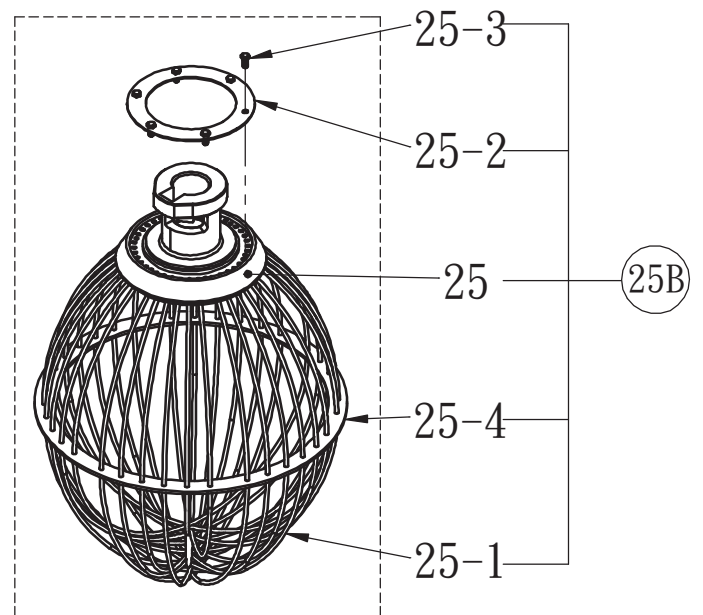
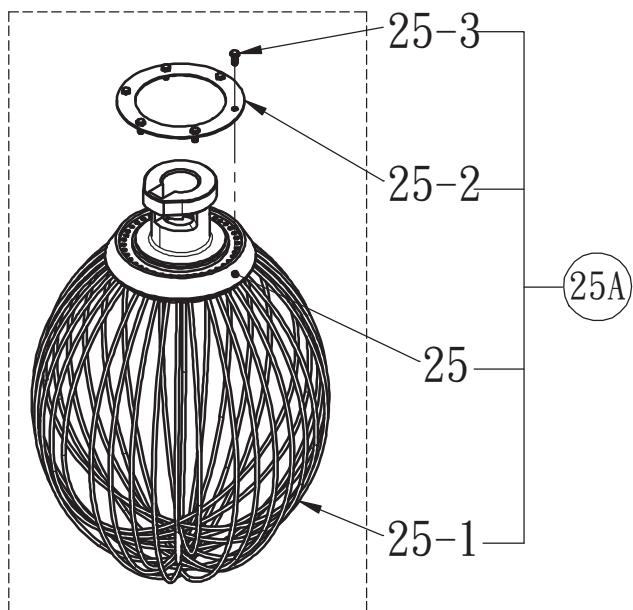


Model SP-B80HI



2017 Version

SP-B80HI & SP-B62P ACCESSORY LIST - UNIT A



SP-B80HI BODY & ACCESSORY PART TABLE

ITEM	PART NO.	Q'ty	REMARK
1	A108-A1309-C4	3	
1-1	A-8001-1	3	
1-2	A301-A13-16-2-F/G1	3	
2	A-8002	1	
2-1	A-8002-1	4	
3	22004-2	1	
4	T102-005	1	
5	A106-A1005-D	6	
6	A-8006	1	
6-1	A-8006-1	1	
7	A-8007	1	
7-1	A-8007-1	1	
7-2	A-8007-S8	1	
8	A114-A1006-D	4	
8-1	A301-A10-13-1-D	4	
9	A-8009	1	
10	A901-10040/G1	8	
11	A-8011	1	
11A	A-8011S	1 SET	ASSEMBLY PART (4 PCS AS ONE SET)
11-1	-	2	
11-2	-	2	
12	A302-A18-B4	4	
12-1	A301-A18-25-1-A1	4	
13	A101-A1815-B4	4	
14	XXX	XX	
15	XXX	XX	
16	XXX	XX	
16-1	XXX	XX	
17	200085-1	1	
18	A106-A1006-A1	2	
19	J501-001	1	
20	A105-A0814-A1	2	
20-1	A301-A08-12-1-A1	2	
21	J402-001	1	
22	A102-A1712-C4	10	
22-1	A-8022-1	6	
23	A-8023	1	
23-1	A-8023-1	1	

SP-B80HI BODY & ACCESSORY PART TABLE

ITEM	PART NO.	Q'ty	REMARK
23-2	A-8023-2	1	
24	A101-A1714-B4	6	
24-1	A-8024-1	1	
24-2	A-8024-2	1	
25A	A-8025A	1	STANDARD-4mm WIRE WHIP
	A-8025A-d5	1	OPTIONAL-5mm WIRE WHIP
25B	A-8025B	1	OPTIONAL-4mm WIRE WHIP WITH RING
	A-8025B-d5	1	OPTIONAL-5mm WIRE WHIP WITH RING
25	-	1	
	-	1	
25-1	-	18	
	-	9	
25-2	60031-1	1	
25-3	A101-A1006-D	6	
25-4	-	1	
	-	1	
26	A-8026	1	STANDARD- ALUMINUM BEATER
	A-8026-1	1	OPTIONAL- STAINLESS STEEL BEATER
26-C	A-80500	1	OPTIONAL- STAINLESS STEEL C-WING WHIP
26-C-1	-	1	
27	A-8027	1	OPTIONAL- DOUGH HOOK (ROUND TYPE)
27-1	-	1	
27-2	A-8027-2	1	STANDARD- DOUGH HOOK (SQUARE TYPE)
28	A-8028	1	STANDARD BOWL
S1	A-8029S	1	NOT INCLUDE WHEELS
29	-	1	
29-1	-	3	
29-2	30032-T	3	
30	T301-001	3	
31	A201-C06-A1	3	
32	A302-C06-A1	3	
S2	TROLLY/80	1	COMPLETE SET BOWL TRUCK
33~44	XXX	XX	
45	A302-A13-A1	4	
46	A301-A13-16-3-A1	4	
47~49	XXX	XX	
50	XXX	XX	
51	A302-A17-A1	4	

SP-B80HI BODY & ACCESSORY PART TABLE

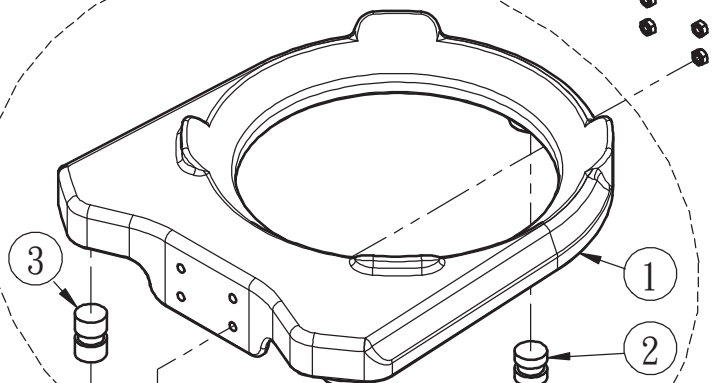
ITEM	PART NO.	Q'ty	REMARK
52	A301-A17-25-1-A1	4	
S3	A-8055S	1	ASSEMBLY PART
53	A204-A13-A1	1	
54	A301-A13-25-1-D	1	
55	A-8055	1	
56	A101-A1309-A1	5	
57	T601-001	1	
58	A-8058	1	
58-1	A-8058-1	2	
59	XXX	XX	
60	XXX	XX	
61	A201-A13T060-A1	2	
62	A101-A1306-A1	2	
63	A101-A1109-A1	4	
64	A201-A11-A1	4	

SP-B80HI & SP-A80HI NEW BOWL TRUCK WITH HANDLE- UNIT A

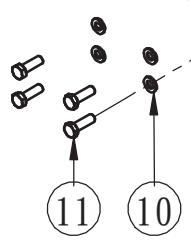
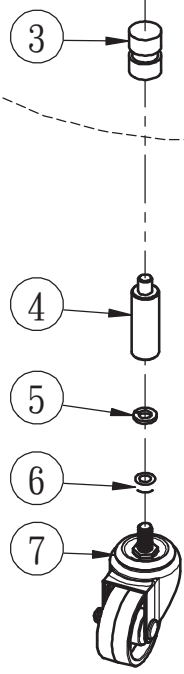
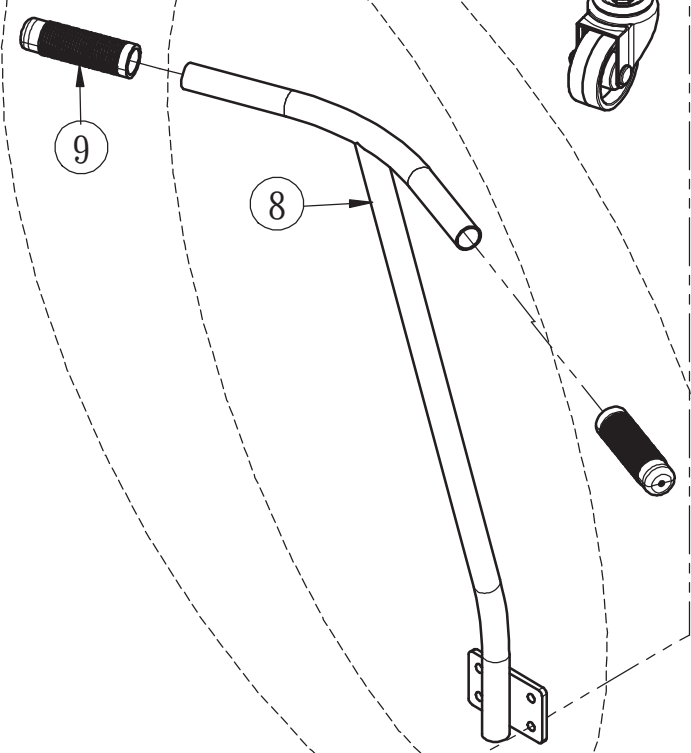
S3

S1

12



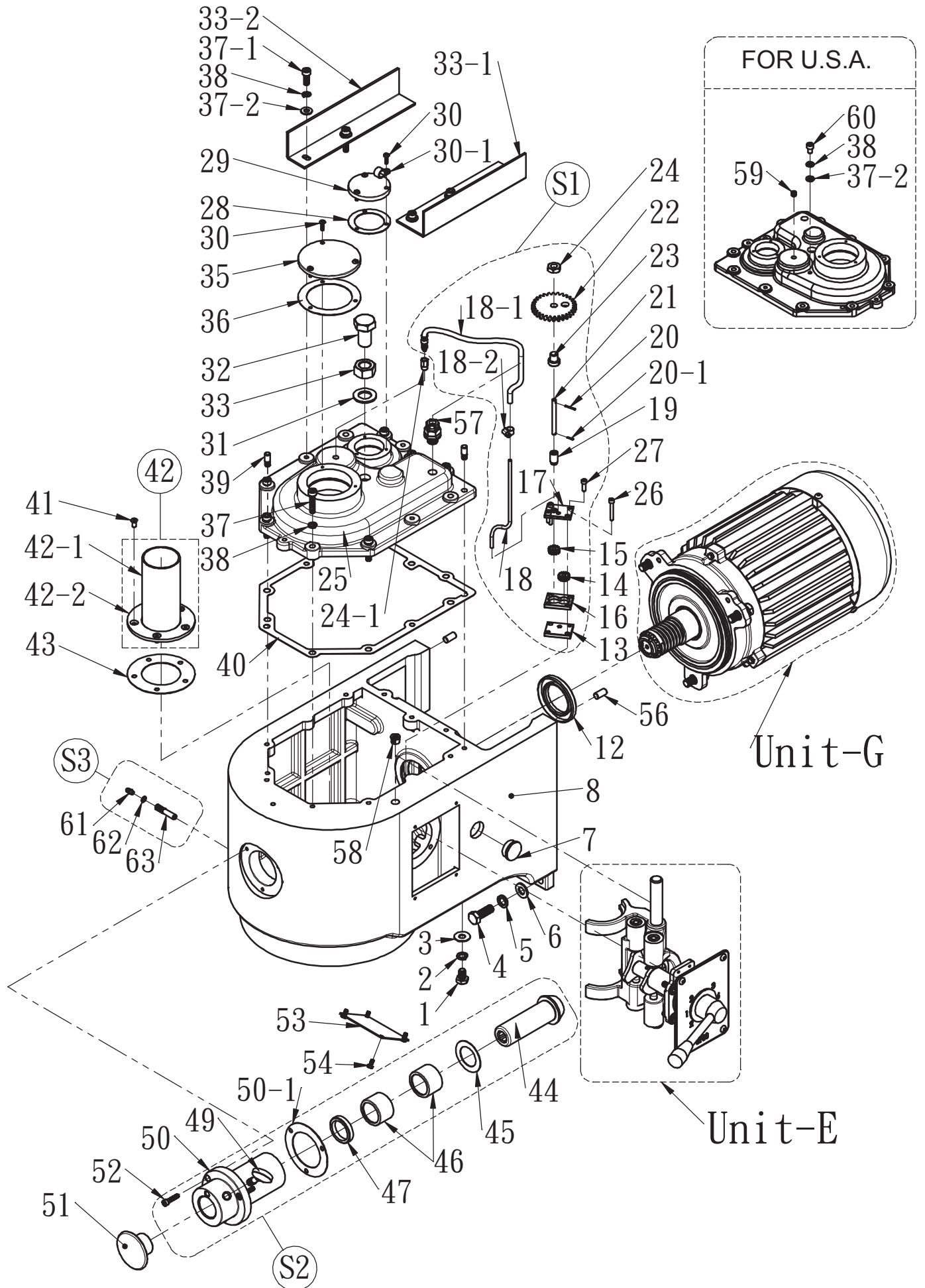
S2



SP-B80HI & SP-A80HI NEW BOWL TRUCK WITH HANDLE OPTIONAL ACCESSORY

ITEM	PART NO.	Q'ty	REMARK
S1	60033	1	ASSEMBLY PART; OPTIONAL
1	-	1	
2	-	1	
3	-	2	
4	60033-A80	3	
5	A302-C06-A1	3	
6	A201-C06-A1	3	
7	T301-001	3	
S2	60033-4S	1	ASSEMBLY PART; OPTIONAL
8	60033-4	1	
9	60033-5	2	
10	A302-A13-A1	4	
11	A101-A1310-A1	4	
12	A201-A13T060-A1	4	
S3	TROLLY/A80-N	1	COMPLETE SET NEW BOWL TRUCK WITH HANDLE; OPTIONAL

SP-B80HI & SP-A80HI HEAD UNIT- UNIT B



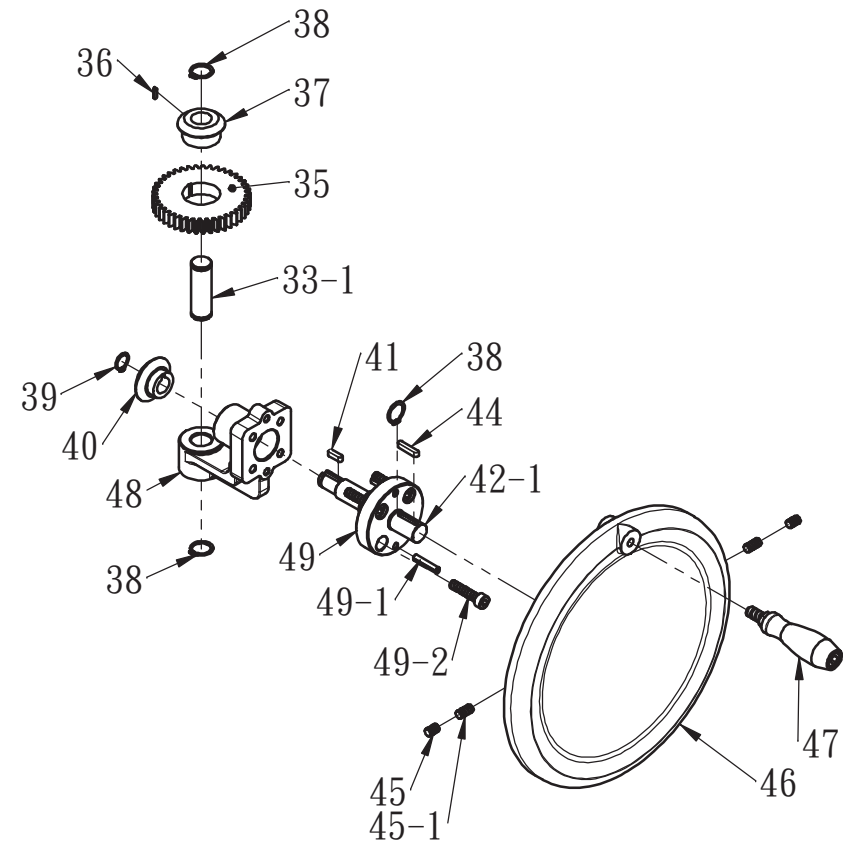
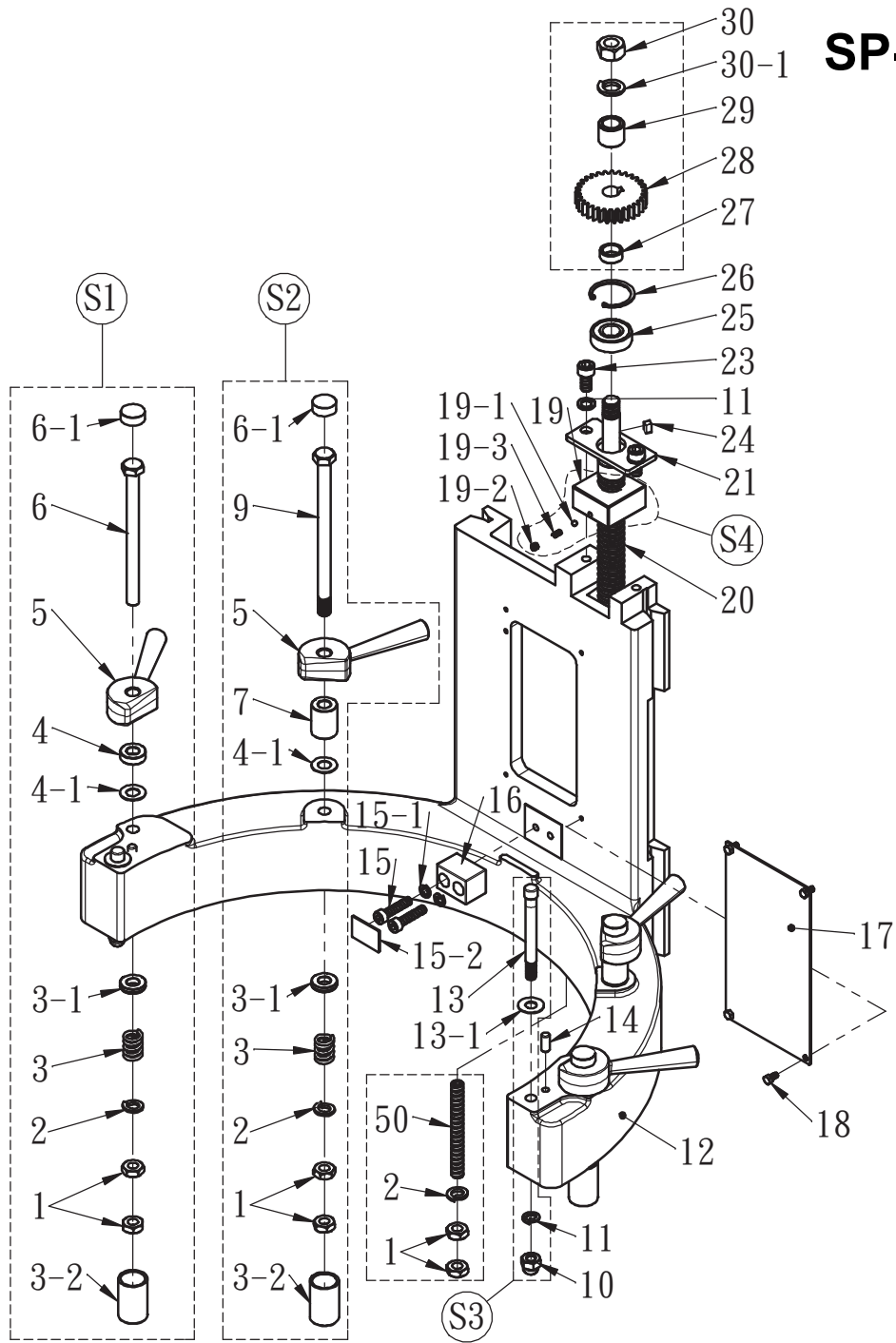
SP-B80HI & SP-A80HI HEAD UNIT

ITEM	PART NO.	Q'ty	REMARK
1	A101-A1508-A1	1	
2	A302-A15-B4	1	
3	A301-A15-20-1-A1	1	
4	A101-A1712-B4	2	
5	A302-A17-A1	2	
6	A301-A17-25-1-A1	2	
7	U701-001	1	
8	B-8008	1	WITH ATTACHMENT HUB USE
	B-8008-1	1	NO ATTACHMENT HUB USE
9~11	XXX	XX	
12	TC-508010/T	1	
S1	B-8013S	1 SET	OIL PUMP ASSEMBLY PART
13	-	1	
14	-	1	
15	-	1	
16	-	1	
17	-	1	
18	-	1	
18-1	-	1	
18-2	-	1	
19	-	1	
20	-	1	
20-1	-	1	
21	-	1	
22	-	1	
23	-	1	
24	-	1	
27	A102-A1008-C4	2	
24-1	T106-001	1	
25	B-8025	1	
26	A102-A1011-C4	2	
28	B-8028	1	
29	B-8029	1	
30	A106-A0805-A1	6	
30-1	T201-090	1	
31	A301-A21-37-1-A1	1	
32	A101-A2112-A1	1	
33	A201-A21-A1	1	
33-1	B-8033-1	1	
33-2	B-8033-2	1	
34	XXX	XX	
35	B-8035	1	
36	B-8036	1	
37	A102-A1312-C4	9	
37-1	A102-A1309-C4	2	
37-2	A301-A13-16-3-A1	5	
38	A302-A13-B4	12	

SP-B80HI & SP-A80HI HEAD UNIT

ITEM	PART NO.	Q'ty	REMARK
39	B-8039	2	
40	B-8040	1	
41	A108-A1106-C4	5	
42	B-8042	1	ASSEMBLY PART
42-1	-	1	
42-2	-	1	
43	B-8043	1	
S2	B-8050S	1	
44	B-8044	1	WITH ATTACHMENT HUB USE
45	B-8045	1	WITH ATTACHMENT HUB USE
46	A503-TA3530	2	WITH ATTACHMENT HUB USE
47	TC-354508	1	WITH ATTACHMENT HUB USE
48	XXX	XX	
49	200005	1	WITH ATTACHMENT HUB USE
50	B-8050	1	WITH ATTACHMENT HUB USE
50-1	B-8050-1	1	WITH ATTACHMENT HUB USE
51	22017	1	WITH ATTACHMENT HUB USE
52	A102-A1109-C4	3	
53	B-8053	1	
54	A101-A1005-DB/G1	4	
55	XXX	XX	
56	B-8056	2	
57	T701-001	1	
58	T601-001	1	
59	A117-E0137-C4	1	OPTIONAL FOR U.S.A. AND POLAND USE
60	A102-B1306-C4	1	STANDARD
S3	30165S	1	ASSEMBLY PART
61	200142	1	
62	200141	1	
63	30165	1	

SP-B80HI LIFTING & CRADLE UNIT UNIT C



SP-B80HI LIFTING & CRADLE UNIT

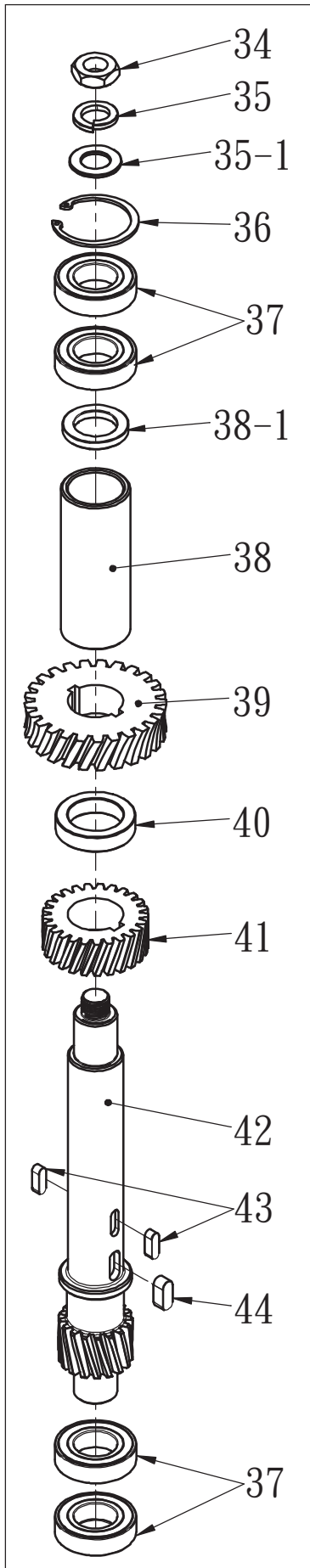
ITEM	PART NO.	Q'ty	REMARK
S1	C-8004S	2	ASSEMBLY PART
1	A201-A17T070-A1	10	
2	A302-A17-B4	5	
3	30108-2	4	
3-1	30108-1	4	
3-2	C-8057	4	
4	C-8004	2	
4-1	A301-A17-25-2-D	4	
5	C-8005	4	
6	A101-A1727-A1	2	
6-1	A-8024-2	4	
S2	C-8007S	2	
7	C-8007	2	
8	XXX	XX	
9	A101-A1728-A1	2	
S3	C-8013S	2	ASSEMBLY PART
10	A204-A15-A1	2	
11	A302-A15-A1	4	
13	C-8013	2	
13-1	A301-A16-25-1-D	2	
12	C-8012	1	
14	C-8014	2	
15	A102-A1312-C4	2	
15-1	A302-A13-B4	2	
15-2	C-8015-2	1	
16	C-8016	1	
17	C-8017	1	
18	A101-A1005-DB/G1	4	
S4	C-8019S	1	ASSEMBLY PART
19	-	1	
19-1	-	1	
19-2	-	1	
19-3	-	1	
20	-	1	
21	C-8021	1	
22	XXX	XX	
23	A102-A1509-C4	1	
24	A401-060612	1	
24-1	XXX	XX	
25	A502-6203LLU	1	
26	RTW-40	1	
27	C-8027	1	
28	C-8028	1	
29	C-8029	1	
30	A201-A19-A1	1	
30-1	A302-A19-B4	1	
31	-	1	

SP-B80HI LIFTING & CRADLE UNIT

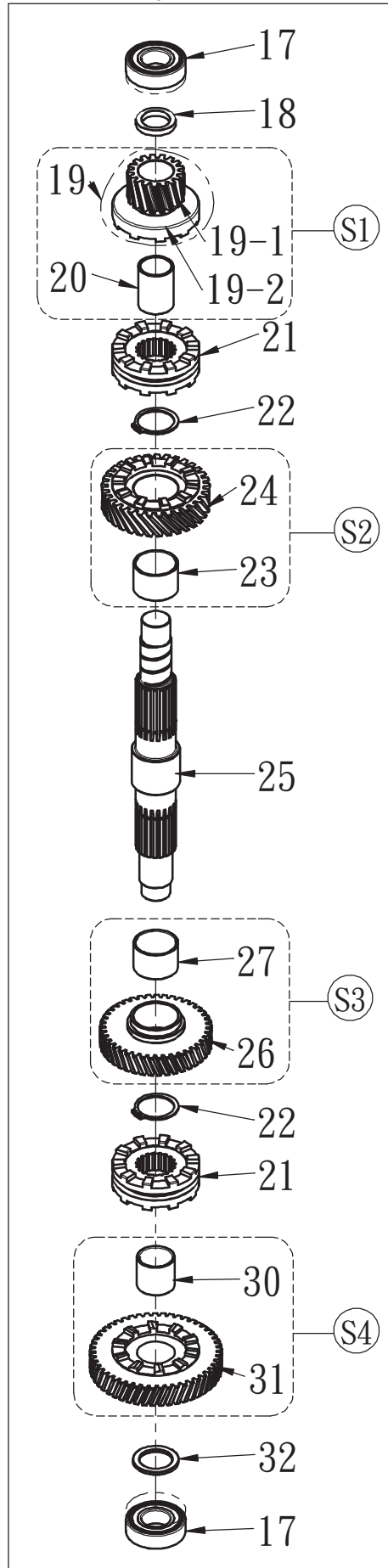
ITEM	PART NO.	Q'ty	REMARK
32	-	1	
33	-	1	
33-1	C-8033-1	1	METAL PLATE BODY USE ONLY
34	-	1	
35	C-8035	1	
36	A402-030312	1	
37	C-8037	1	
38	STW-19	3	
39	STW-15	1	
40	C-8040	1	
41	A402-050517	1	
42-1	C-8042-1	1	METAL PLATE BODY USE ONLY
43	XXX	XX	
44	A402-050525	1	
45	A103-A1306-C4	2	
45-1	A103-A1308-C4	2	
46	C-8046	1	
47	B101-001	1	
48	C-8048	1	
49	C-8049	1	
49-1	A902-06030	2	
49-2	A102-A1311-C4	4	
50	A103-A1723-C4	1	

SP-B80HI GEAR BOX (4 SPEEDS VERSION)- UNIT D

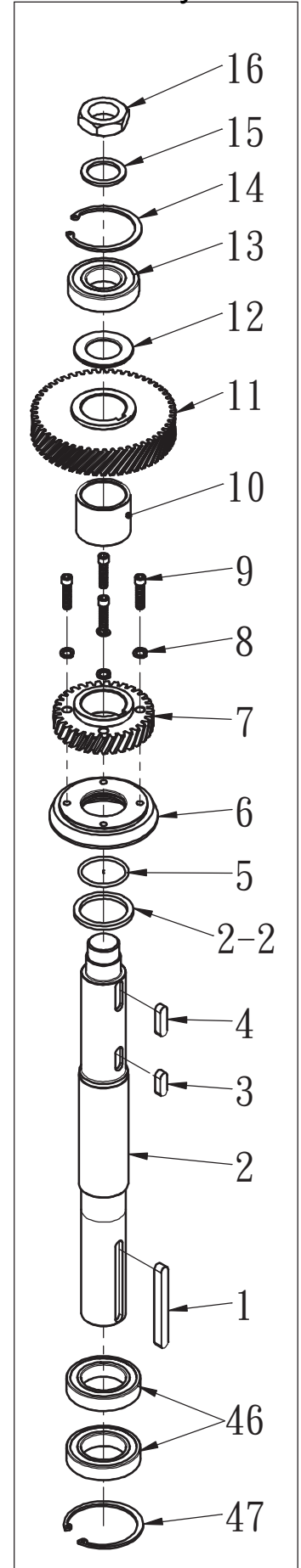
Drive Shaft Assembly



Transmission Shaft Assembly



Master Shaft Assembly



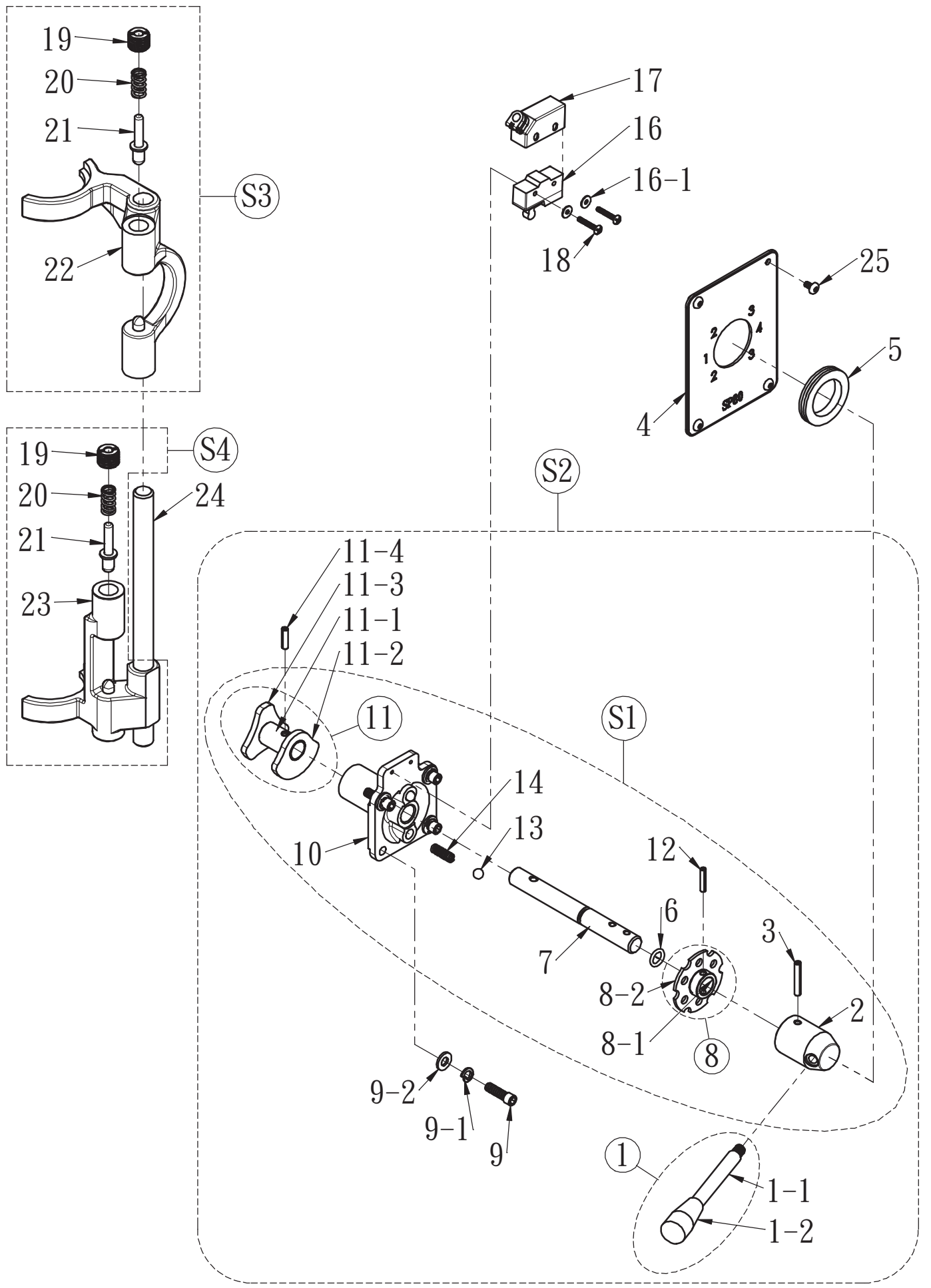
SP-B80HI & SP-A80HI GEAR BOX (4 SPEEDS VERSION)

ITEM	PART NO.	Q'ty	REMARK
1	A402-1010100	1	
2	D-8002	1	STANDARD ONE
	D-8002-1	1	FOR U.S.A. USE ONLY
2-2	D-8002-2	1	
3	A402-100825	1	
4	A402-100835	1	
5	A601-043-02	1	
6	D-8006	1	41T
	D-8006-1	1	NO ATTACHMENT HUB USE
7	D-8007	1	35T
8	A302-A13-A1	4	
9	A102-A1311-C4	4	
10	D-8010	1	
11	D-8011	1	53T
12	D-8012	1	
13	A502-6207LLU	1	
14	RTW-72	1	
15	A301-B59-45-1-A1/G1	1	
16	A201-B59T140-A1/G1	1	
17	A502-6205LLU	2	FOR U.S.A. AND POLAND USE ONLY
	A504-NJ205	2	STANDARD
18	D-8018	1	
S1	D-8019S	1	ASSEMBLY PART- 17T
19	-	1	
19-1	-	1	
19-2	-	1	
20	-	1	
21	D-8021	2	
22	STW-35	2	
S2	D-8024S	1	ASSEMBLY PART- 33T
23	-	1	
24	-	1	
25	D-8025	1	
S3	D-8026S	1	ASSEMBLY PART-41T
26	-	1	
27	-	1	
28~29	XXX	XX	

SP-B80HI & SP-A80HI GEAR BOX (4 SPEEDS VERSION)

ITEM	PART NO.	Q'ty	REMARK
S4	D-8031S	1	ASSEMBLY PART-49T
30	-	1	
31	-	1	
32	D-8032	1	
33	XXX	XX	
34	A201-B29T080-A1	1	
35	A302-A19-B4	1	
35-1	A301-A19-30-2-A1	1	
36	RTW-47	1	
37	A502-6005LLU	4	
38	D-8038	1	
38-1	D-8038-1	1	
39	D-8039	1	STANDARD 29T-50HZ USE
	D-8039-1	1	STANDARD 29T-60HZ USE
	D-8039-2	1	26T-50HZ USE
	D-8039-3	1	25T-60HZ USE
40	D-8040	1	
41	D-8041	1	25T
42	D-8042	1	
43	A402-060617	2	
44	A402-080820	1	
45	XXX	XX	
46	A502-6009LLU	2	
47	RTW-75	1	

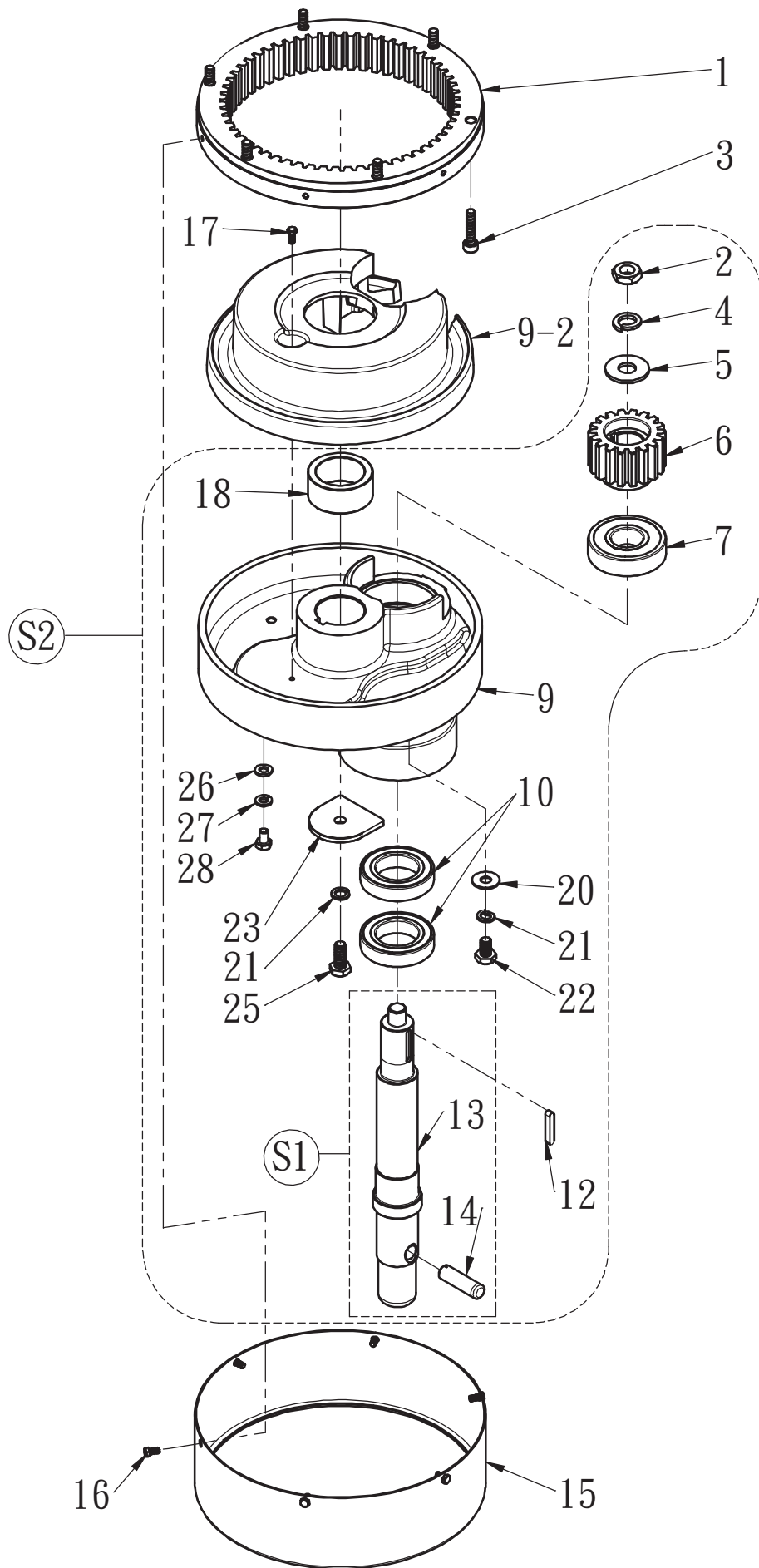
SP-B80HI & SP-A80HI SPEED HANDLE & YOKE-SHIFTER ASSEMBLY- UNIT E



SP-B80HI & SP-A80HI SPEED HANDLE & YOKE-SHIFTER ASSEMBLY

ITEM	PART NO.	Q'ty	REMARK
S2	E-8001S	1	COMPLETE SET SPEED HANDLE ASSEMBLY
S1	E-8010S	1	SPEED HANDLE WITHOUT #1, #9, #9-1 AND #9-2
1	E-8001	1	ASSEMBLY PART
1-1	-	1	
1-2	U102-002	1	
2	-	1	
3	-	1	
6	-	1	
7	-	1	
8	-	1	
8-1	-	1	
8-2	-	1	
9	A102-A1310-C4	4	
9-1	A302-A13-A1	4	
9-2	A301-A13-16-3-A1	4	
10	-	1	
11	-	1	
11-1	-	1	
11-2	-	1	
11-3	-	1	
11-4	-	1	
12	-	1	
13	-	2	
14	-	2	
4	E-8004	1	4 SPEEDS USE WITH SPAR LOGO
	E-8004-1	1	4 SPEEDS USE WITHOUT LOGO
5	E-8005	1	
16	J401-001	1	
16-1	A301-A08-12-1-A1	2	
17	J501-001	1	
18	A105-A0810-A1	2	
S3	E-8022S	1	YOKE-SHIFTER ASSEMBLY-TOP
19	E-8019	2	
20	E-8020	2	
21	E-8021	2	
22	E-8022	1	
S4	E-8023S	1	YOKE-SHIFTER ASSEMBLY-DOWN
23	E-8023	1	
24	E-8024	1	
25	A105-A1005-A1	4	

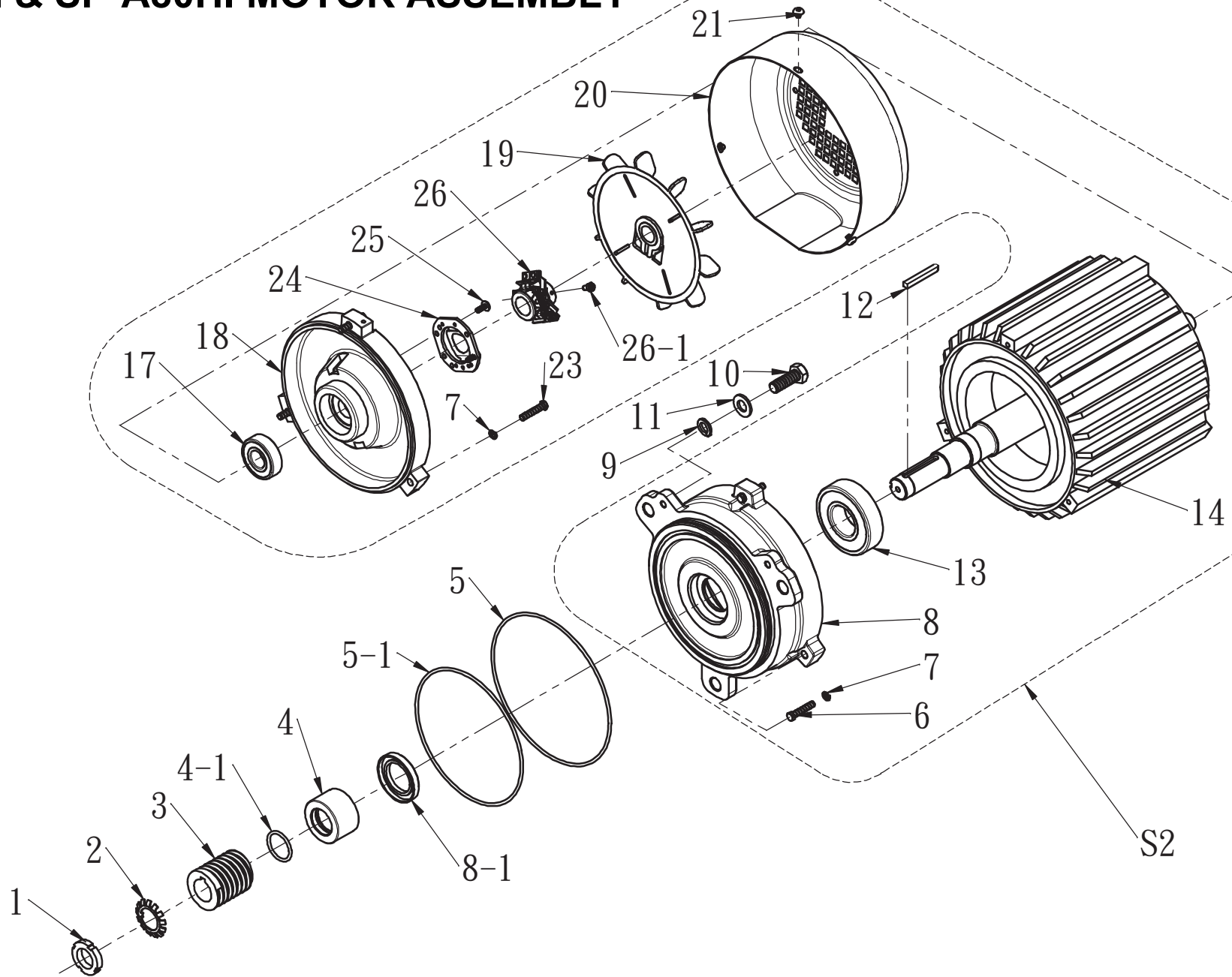
SP-B80HI & SP-A80HI PLANETARY UNIT- UNIT F



SP-B80HI & SP-A80HI PLANETARY UNIT- UNIT F

ITEM	PART NO.	Q'ty	REMARK
1	F-8001	1	
2	A201-B29T080-A1	1	
3	A102-A1312-C4	6	
4	A302-A19-B4	1	
5	A301-A19-40-1-A1	1	
6	F-8006	1	
7	A502-6306LLU	1	
8	XXX	XX	
9	F-8009	1	
9-2	F-8009-2	1	SP-B80HI & SP-A80HI USE ONLY
10	A502-6008LLU	2	
10-1	XXX	XX	
11	XXX	XX	
12	A402-060635	1	
S1	F-8013S	1	ASSEMBLY PART
13	-	1	
14	F-8014	1	
15	F-8015	1	NO SAFETY GUARD USE ONLY
16	A101-A1005-DB/G1	6	
17	A101-A1008-D	1	
18	F-8018	1	
19	XXX	XX	
20	A301-A15-20-1-A1	2	
21	A302-A15-A1	3	
22	A101-A1508-A1	2	
23	F-8023	1	
25	A101-A1510-B4	1	
26	A301-A13-16-3-A1	3	
27	A302-A13-A1	3	
28	A101-A1306-A1	3	
S2	F-8009S	1	ASSEMBLY PART FOR SP-B62P & SP-62P USE
	F-8009S-1	1	ASSEMBLY PART FOR SP-B80HI & SP-A80HI

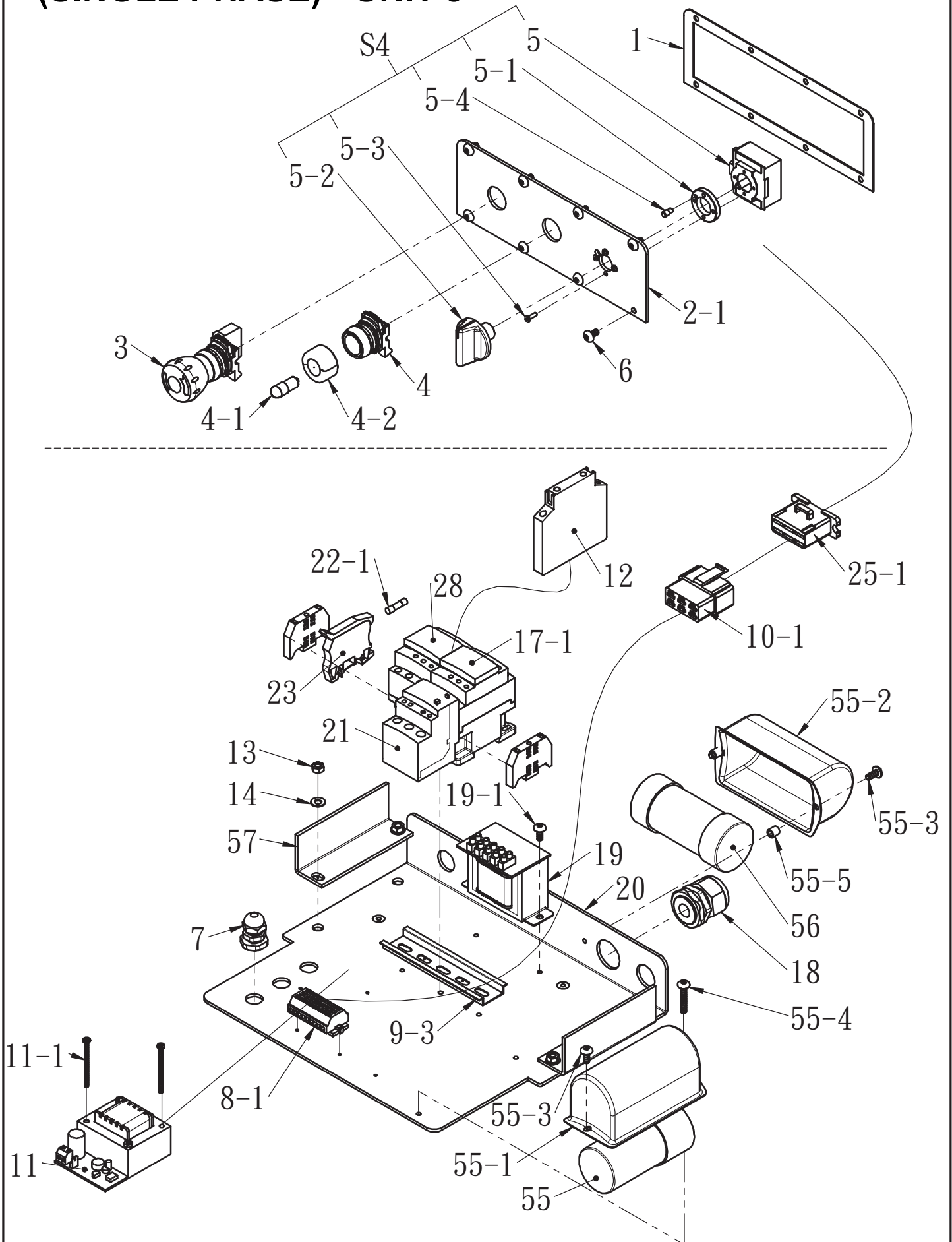
SP-B80HI & SP-A80HI MOTOR ASSEMBLY UNIT G



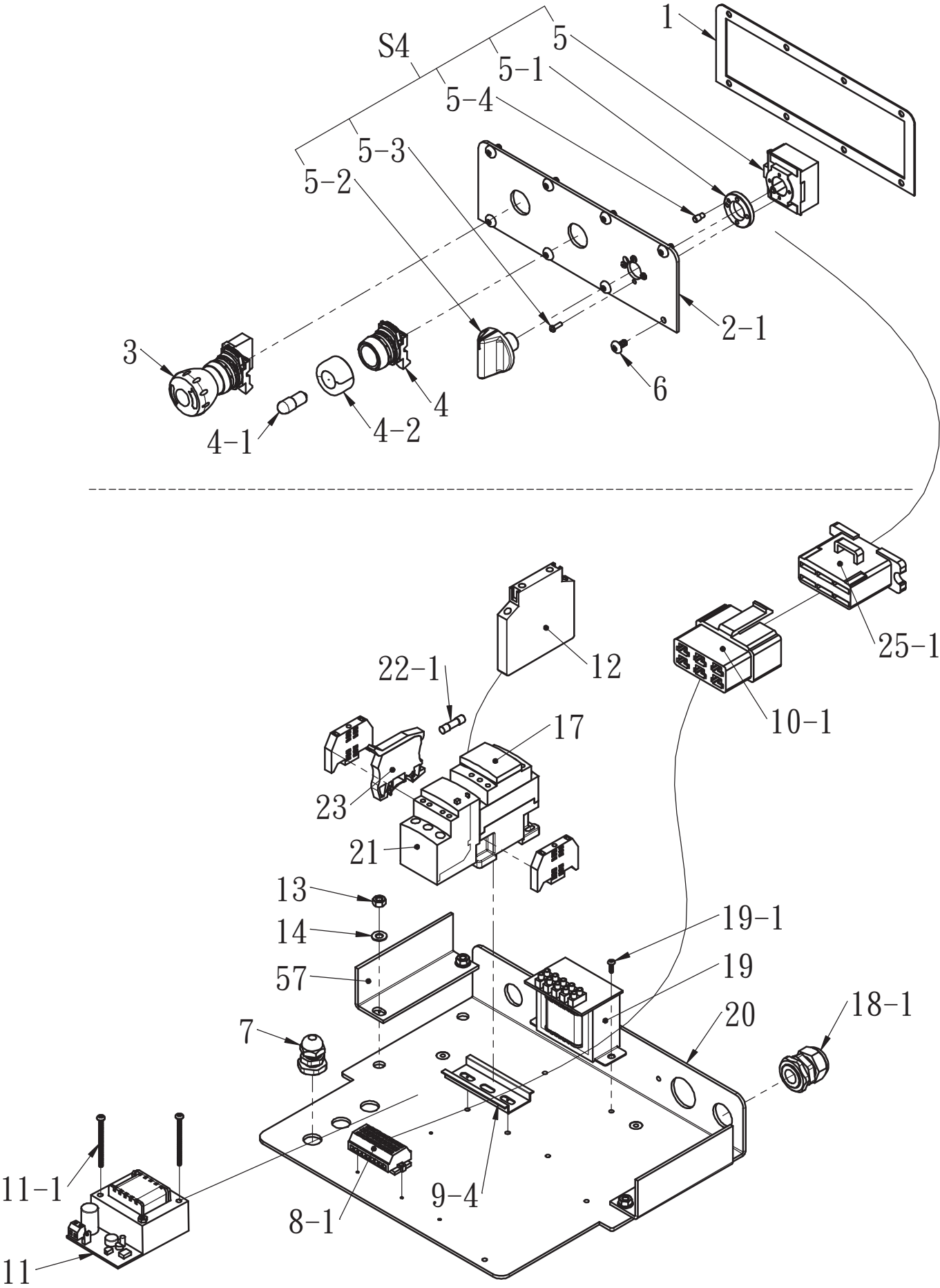
SP-B80HI & SP-A80HI MOTOR ASSEMBLY

ITEM	PART NO.	Q'ty	REMARK
1	G-8001	1	
2	G-8002	1	
3	G-8003	1	STANDARD 50HZ USE- 5T
	G-8003-1	1	STANDARD 60HZ USE-4T
	G-8003-2	1	SP-64P USE ONLY-5Y
	G-8003-4	1	SP-62P MODEL USE FOR U.S.A.- 3T 60HZ USE
4	G-8004	1	
4-1	A601-G30	1	
5	A601-170-01	1	
5-1	A601-155-01	1	
S2	MT-000A80	1	COMPLETE MOTOR SET; PLEASE SPECIFY VOLTAGE WHEN ORDERING
6	SN-A101-C0211	3	
7	A302-C02-A1	6	
8	G-8008	1	
8-1	TC-355508/T	1	
9	A302-A17-A1	3	
10	A101-A1712-B4	2	
11	A301-A17-25-1-A1	3	
12	A401-060648	1	
13	A502-6307LLU	1	
14	G-8014	1	THREE PHASE- STANDARD ONE
	G-8014-1	1	SINGLE PHASE- STANDARD ONE
	G-8014-A	1	BREAK VERSION FOR U.S.A. USE ONLY
	G-8014-1A	1	BREAK VERSION FOR U.S.A. USE ONLY
17	A502-6204ZZ	1	
18	G-8018	1	STANDARD ONE
	G-8018-1	1	BREAK VERSION FOR U.S.A. USE ONLY
19	G-8019	1	
20	G-8020	1	STANDARD ONE
	G-8020-1	1	BREAK VERSION FOR U.S.A. USE ONLY
21	SN-A110-C0102	3	
22	XX	XX	
23	SN-A101-C0211	3	STANDARD ONE
	SN-A101-C0213	3	BREAK VERSION FOR U.S.A. USE ONLY
24	J701-001	1	SINGLE PHASE USE ONLY
25	SN-A105-A0803	2	
26	J802-19-50	1	50HZ USE- SINGLE PHASE USE ONLY
	J802-19-60	1	60HZ USE- SINGLE PHASE USE ONLY
26-1	SN-A105-A1037	1	

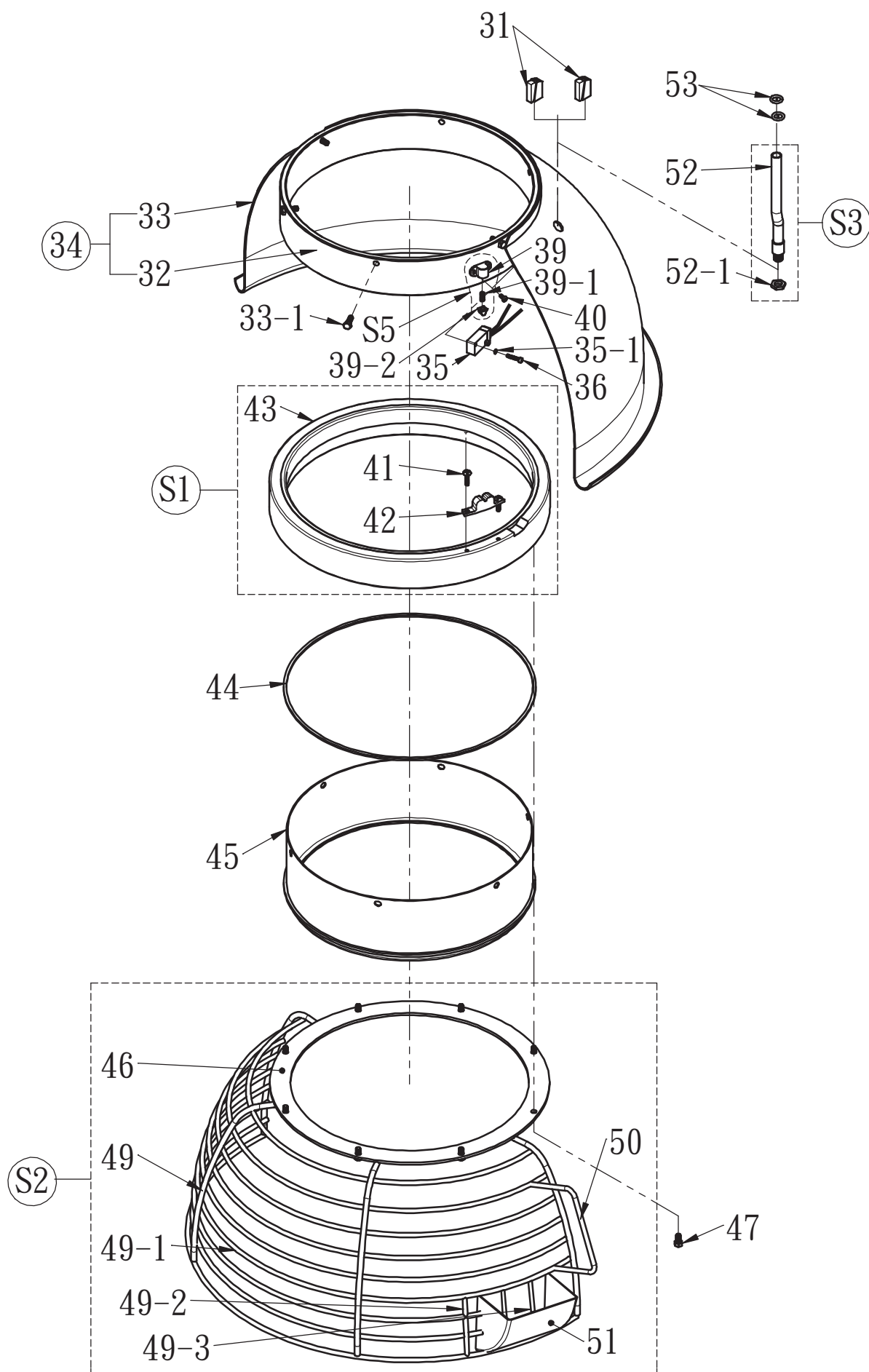
SP-B80HI CONTORL & ELECTRONIC PART (SINGLE PHASE) - UNIT J



SP-B80HI CONTORL & ELECTRONIC PART (THREE PHASE) - UNIT J



SP-B80HI & SP-A80HI SAFETY GUARD - UNIT J



SP-B80HI CONTROL & ELECTRONIC PART

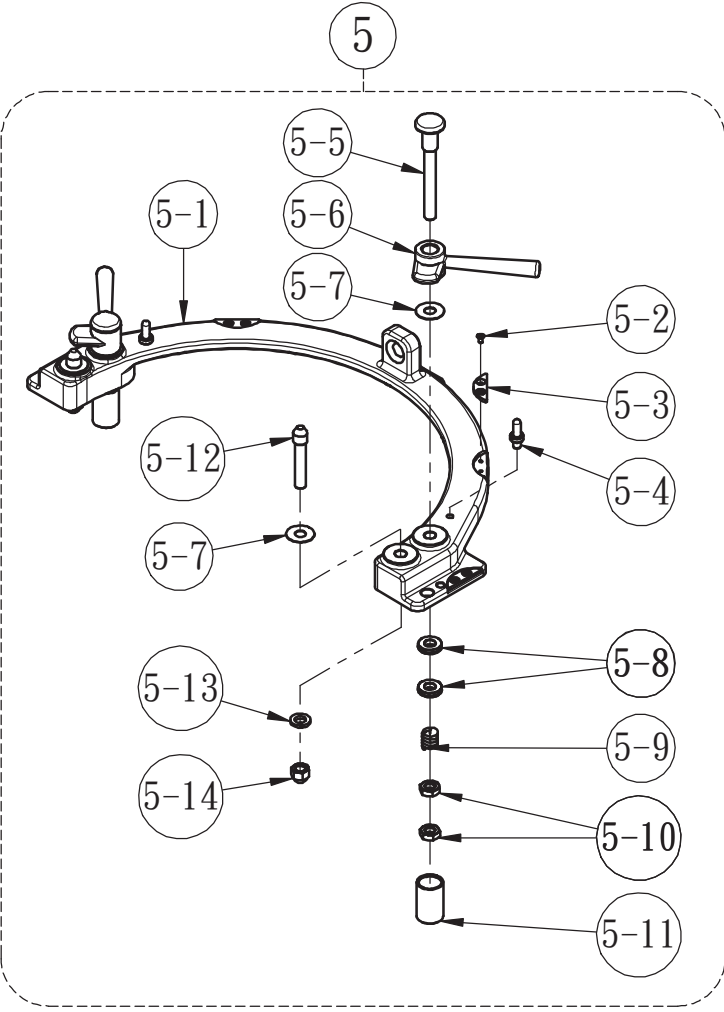
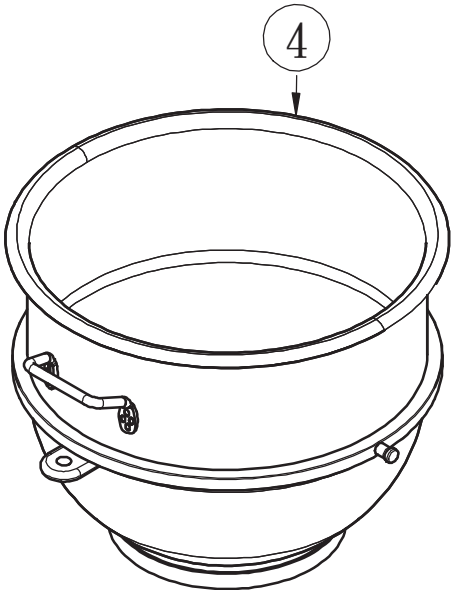
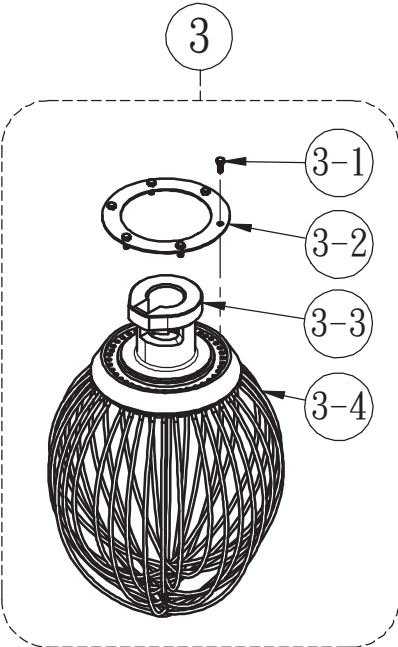
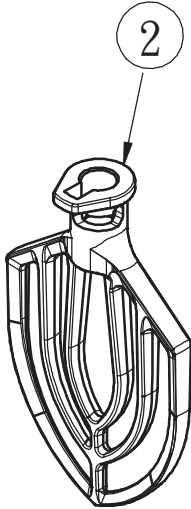
ITEM	PART NO.	Q'ty	REMARK
1	J-8001	1	
2	XXX	XX	
2-1	J-8002-1	1	PANEL WITH SPAR LOGO
3	J101-001	1	
4	J201-001	1	WITH LIGHT
	J203-001	1	NO LIGHT
4-1	K701-001	1	FOR J201-001 USE ONLY
4-2	200517	1	
S4	22008	1	ASSEMBLY PART
5	J301-001	1	
5-1	22008-1	1	
5-2	22008-2	1	
5-3	A104-A0605-A2/G1	4	
5-4	22008-3	1	
6	A106-A0805-D	8	
7	T102-001	3	
8	XXX	XX	
8-1	J-8008	1	
9	XXX	XX	
9-1	XXX	XX	
9-2	XXX	XX	
9-3	J-8009-3	1	SINGLE PHASE USE
9-4	J-8009-4	1	THREE PHASE USE
10	XXX	XX	
10-1	J-8010-1	1	
10-2	XXX	XX	
11	200512	1	OPTIONAL FOR QUBEC USE ONLY
11-1	A105-A0613-A1	2	
12	J-8012	1	
13	A201-A11-A1	4	
14	A301-A11-13-1-A1	4	
15	XXX	XX	
16	XXX	XX	
17	J-8017	1	THREE PHASE USE
17-1	J-8017-1	1	SINGLE PHASE USE
18	T102-005	1	SINGLE PHASE USE
18-1	T102-004	1	THREE PHASE USE
19	J-8019	1	
19-1	A105-A1004-A1	2	
20	J-8020	1	
21	J-8021	1	PLEASE SPECIFY VOLTAGE WHEN ORDERING
22	XXX	XX	
22-1	J-8022-1	1	
23	J-8023	1	
24	XXX	XX	
25	XXX	XX	
25-1	J-8025-1	1	
26	XXX	XX	
27	XXX	XX	
28	J-8028	1	SINGLE PHASE USE
29~30	XXX	XX	

SP-B80HI CONTROL & ELECTRONIC PART

ITEM	PART NO.	Q'ty	REMARK
31	L102-224-101	2	
32	J-8032	1	
33	J-8033	1	
33-1	A101-A1008-D	6	SAFETY GUARD USE
34	J-8034	1	SAFETY GUARD USE
35	J405-001	1	SAFETY GUARD USE
35-1	A302-A06-A1	2	
36	A102-A0608-C2	2	
37	-	2	
38	-	1	
S5	200075	1	ASSEMBLY PART
39	-	1	
39-1	-	1	
39-2	-	1	
40	A106-A0604-D	2	SAFETY GUARD USE
S1	J-8043S	1	SAFETY GUARD USE- ASSEMBLY PART
41	A105-A0805-D	2	
42	22156	1	
43	J-8043	1	
44	J-8044	1	SAFETY GUARD USE
45	J-8045	1	SAFETY GUARD USE
47	A101-A1005-DB/G1	8	SAFETY GUARD USE
S2	J-8048	1	SAFETY GUARD ASSEMBLY
46	-	1	
49	-	4	
49-1	-	1組	
49-2	-	1	
49-3	-	2	
50	-	1	
51	-	1	
S3	J-8052S	1	SAFETY GUARD USE- ASSEMBLY PART
52	-	1	
52-1	-	1	
53	A601-010-01	2	SAFETY GUARD USE
54	T102-002	1	
55	K201-500/250	1	SINGLE PHASE USE- PLEASE SPECIFY VOLTAGE WHEN ORDERING
55-1	SN-80QT-001	1	SINGLE PHASE USE
55-2	SN-80QT-002	1	SINGLE PHASE USE
55-3	A105-A1006-A1	3	SINGLE PHASE USE
55-4	A105-A1011-A1	1	SINGLE PHASE USE
55-5	5A40	2	SINGLE PHASE USE
56	K202-70/300	1	SINGLE PHASE USE- PLEASE SPECIFY VOLTAGE WHEN ORDERING
57	A-8040	2	

40 LITER REDUCTION KIT ACCESSORY SP-A80HI & SP-B80HIA USE - UNIT K

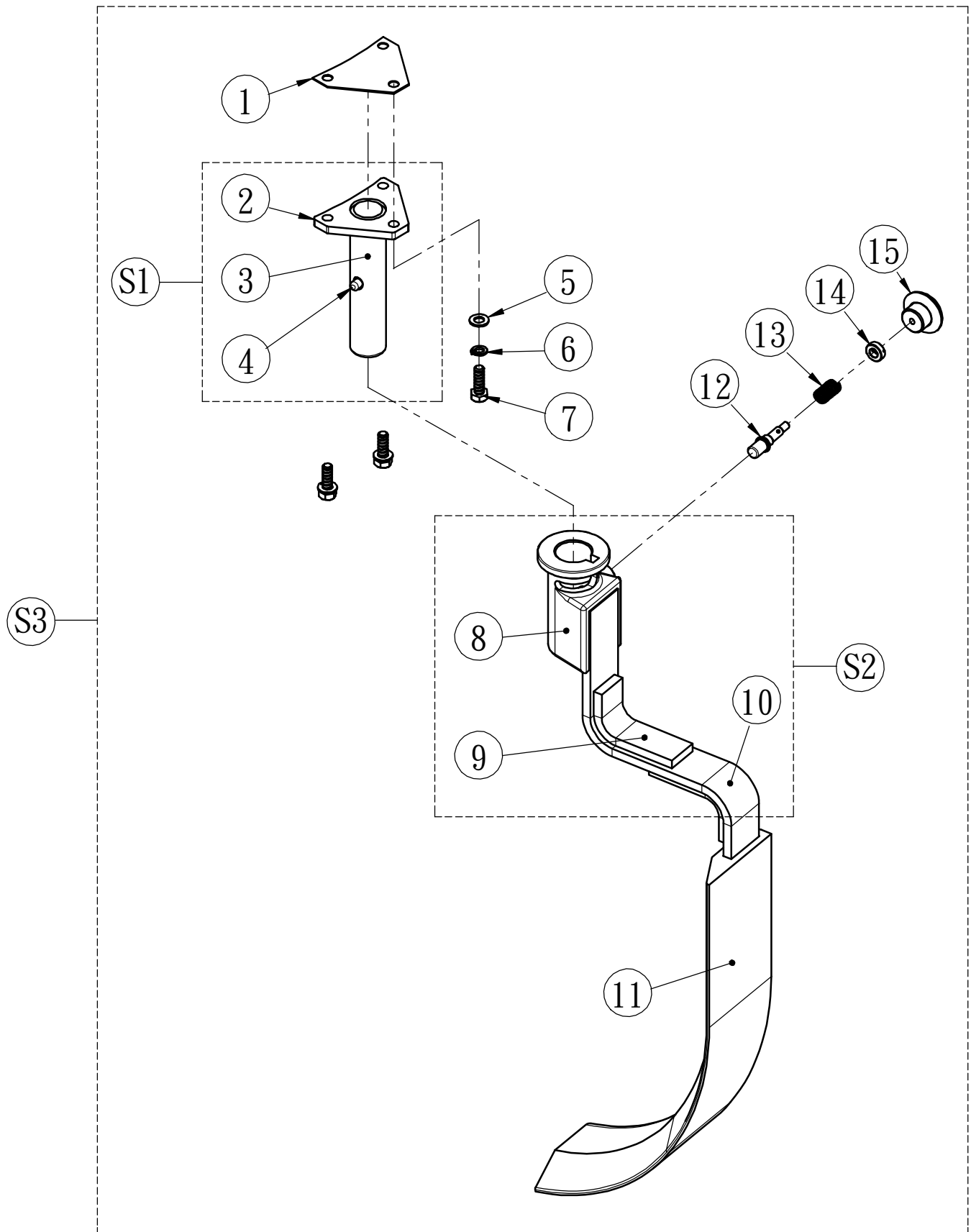
S1



SP-B80HI & SP-A80HI 40 LITER REDUCTION KIT ACCESSORY

ITEM	PART NO.	Q'ty	REMARK
S1	40/A80ACC	1	COMPLETE SET ASSEMBLY
1	K-8016	1	
2	K-8017	1	
3	K-8018	1	WHIP ASSEMBLY- 4MM WIRE
3-1	A101-A1006-D	6	
3-2	60031-1	1	
3-3	-	1	
3-4	-	18	
4	K-8015	1	
5	40/A80RACK	1	ADAPTER ASSEMBLY
5-1	K-8001	1	
5-2	A107-A0804-D	8	
5-3	K-8002	4	
5-4	30109-1	2	
5-5	30108	2	
5-6	30033	2	
5-7	A301-A17-30-1-D	4	
5-8	30108-1	4	
5-9	30108-2	2	
5-10	A201-A17T070-A1	4	
5-11	C-8057	2	
5-12	30109	2	
5-13	A302-A17-A1	2	
5-14	A204-A17-A1	2	

SP-A80HI & SP-B80HI Bowl Scraper Part List



BOWL SCRAPER PART TABLE

ITEM	PART NO.	DESCRIPTION	Q'ty	REMARK
1	L-8001-1	PAD	1	
S1	L-8001S	FIXTURE ASSEMBLY	1	ASSEMBLY PART
2	-		1	
3	-		1	
4	-		1	
5	A301-A13-22-1-D	WASHER (M8x22x1.5t)	3	
6	A302-A13-D	SPRING WASHER (M8)	3	
7	A101-A1310-D	HEXAGON HEAD BOLT	3	
S2	L-8004S	SCRAPER ASSEMBLY- NOT INCLUDE #11 RUBBER	1	ASSEMBLY PART
8	-		1	
9	-		2	
10	-		1	
11	L-8006	WHITE RUBBER	1	
12	L-8009	PIN	1	
13	L-8010	SPRING	1	
14	L-8008	THREAD ROD	1	
15	L-8012	PULLING BALL	1	
S3	L-80/SCRP	COMPLETE BOWL SCRAPER ASSEMBLY	1	